

HEBREWS



Heb 7:2-3

OUTLINE

I. Superiority of Christ	1:1-10:18
A. Over OT Prophets	1:1-4
B. Over OT Personalities	1:5-7:28
1. Superior over Moses	1:5-4:14
2. Superior over David	4:15-5:10
3. Superior over Aaron	5-7
a. Superior Priesthood	5:1-10
b. 3rd Warning	5:11-6:20
c. Superior Order	7

OUTLINE

- c. Superior Order** **7**
- 1) High Significance of Mel.** **7:1-3**
 - a) His High Position** **7:1a**

“This mysterious Melchizedek is mentioned in the OT only twice, yet our author sees him prefiguring the most important ministry of Christ to his people today.”

Ray Stedman

OUTLINE

- c. Superior Order** **7**
- 1) High Significance of Mel.** **7:1-3**
 - a) His High Position** **7:1a**
 - b) His Encounter with Abram** **7:1b-2a**

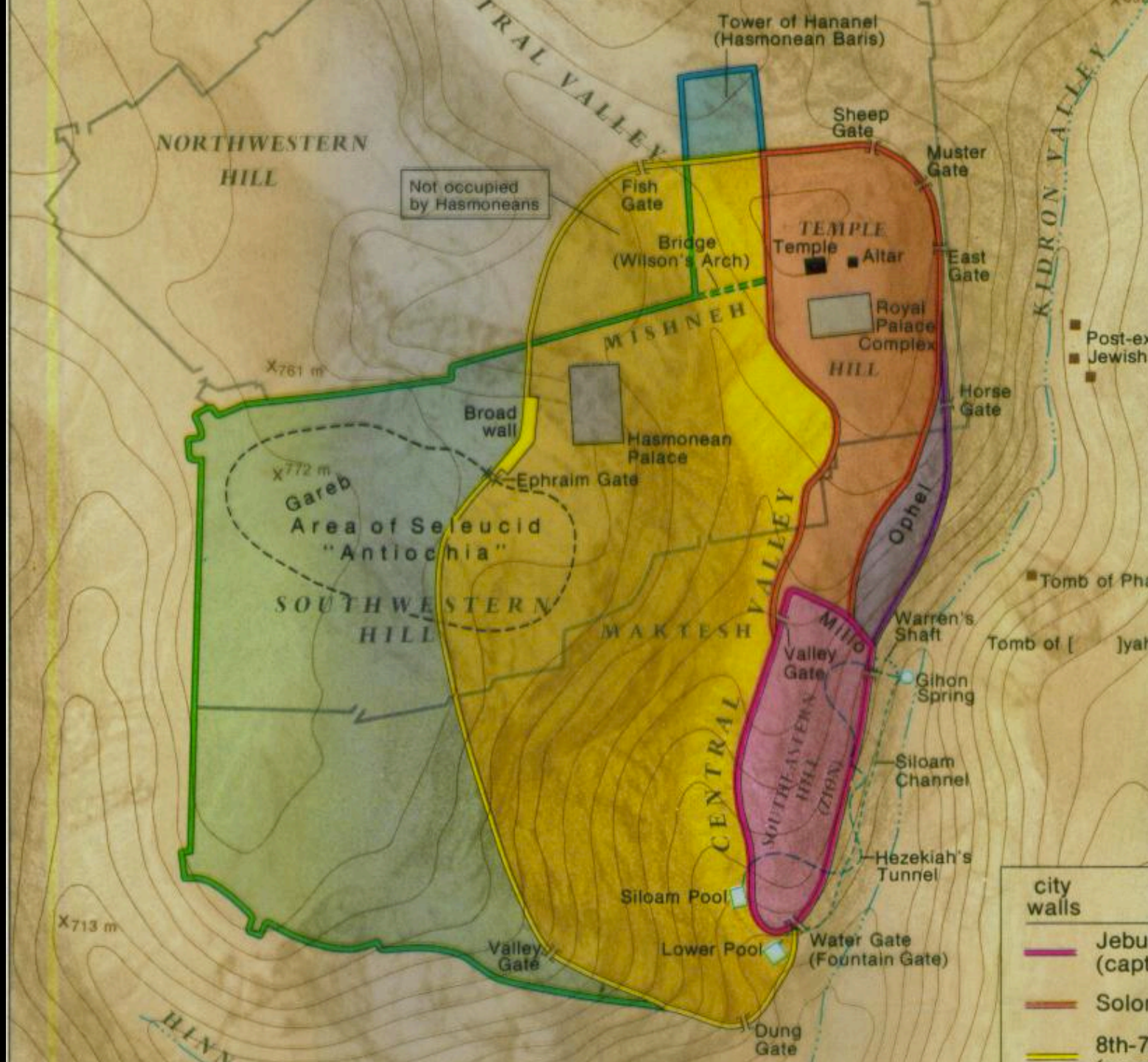
7:1 For this Melchizedek, king of Salem, priest of the Most High God, who met Abraham as he was returning from the slaughter of the kings and blessed him, 2 to whom also Abraham apportioned a tenth part of all the spoils, was first of all, by the translation of his name, king of righteousness, and then also king of Salem, which is king of peace.

PARALLELS

- 1. King**
- 2. Priest**
- 3. Source of
blessing**
- 4. Worshiped**

Gen 14

- 1. Warfare - 14:1-12**
- 2. Rescue - 14:13-16**
- 3. Blessing - 14:17-24**
 - a. Sodom Encounter - 14:17**



NORTHWESTERN
HILL

Not occupied
by Hasmoneans

Tower of Hananel
(Hasmonean Baris)

Sheep
Gate

Muster
Gate

Fish
Gate

Bridge
(Wilson's Arch)

TEMPLE
Temple

Altar

East
Gate

Royal
Palace
Complex

HILL

Horse
Gate

Post-ex
Jewish

X761 m

Broad
wall

MISHNEH

Hasmonean
Palace

Ephraim Gate

X772 m
Gareb

Area of Seleucid
"Antiochia"

SOUTHWESTERN
HILL

MARKESH

CENTRAL
VALLEY

MILLO

Valley
Gate

Warren's
Shaft

Tomb of []yal

Gihon
Spring

Siloam
Channel

Hezekiah's
Tunnel

Siloam Pool

Lower Pool

Water Gate
(Fountain Gate)

Dung
Gate

Valley
Gate

X713 m

city
walls

- Jebu
(capt)
- Solon
- 8th-7

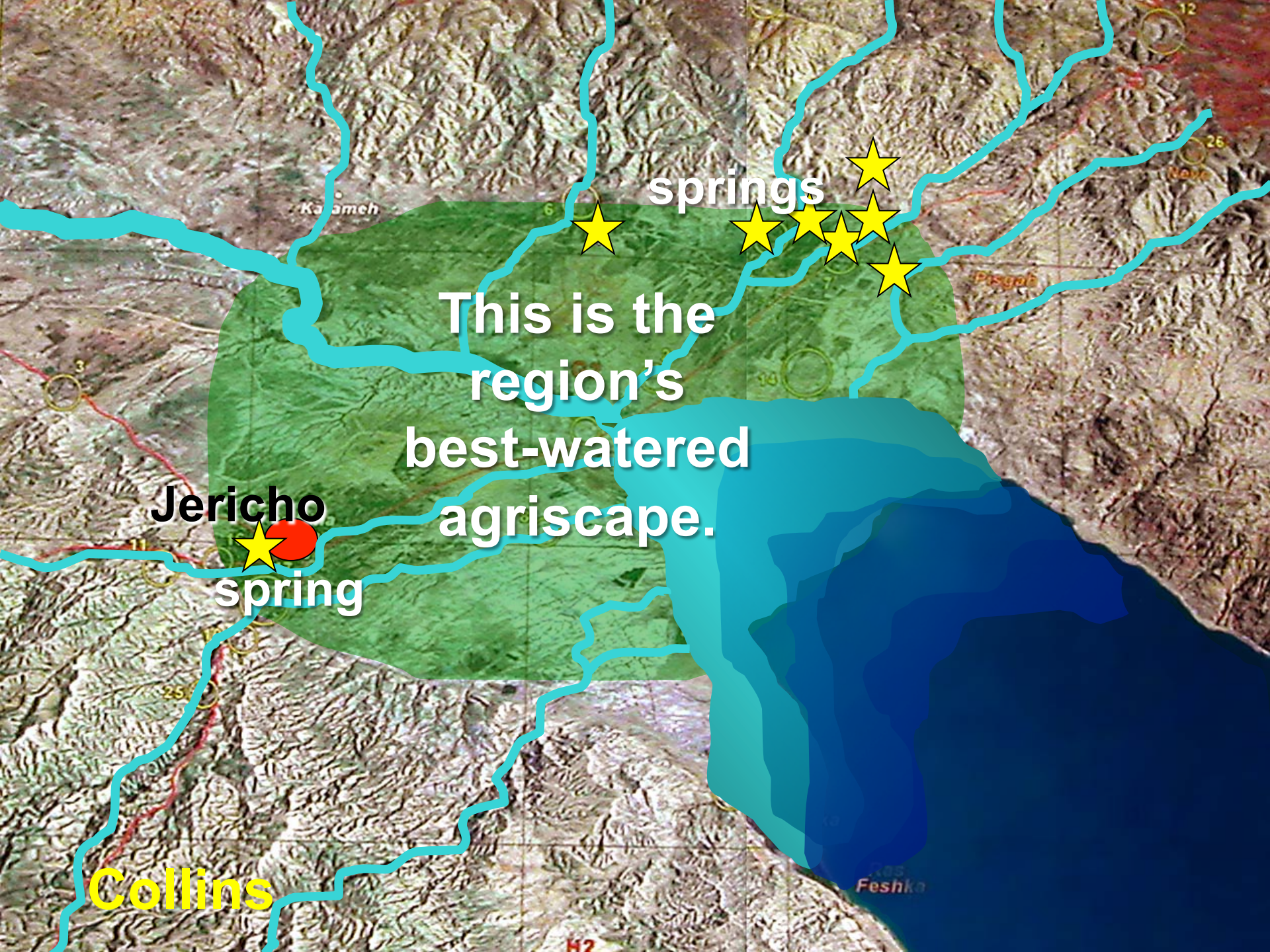
Gen 14

- 1. Warfare - 14:1-12**
- 2. Rescue - 14:13-16**
- 3. Blessing - 14:17-24**
 - a. Sodom Encounter - 14:17**
 - b. Melchizedek - 14:18-20**
 - c. Sodom Bargain - 14:21-24**



Image © 2006 MDA EarthSat
Image © 2006 DigitalGlobe

Collins Google



springs

This is the
region's
best-watered
agriscape.

Jericho

spring

Collins

Feshka

Kasameh

Pisgah

Tall el-Hammam



EBA

IBA

MBA

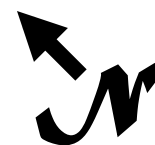
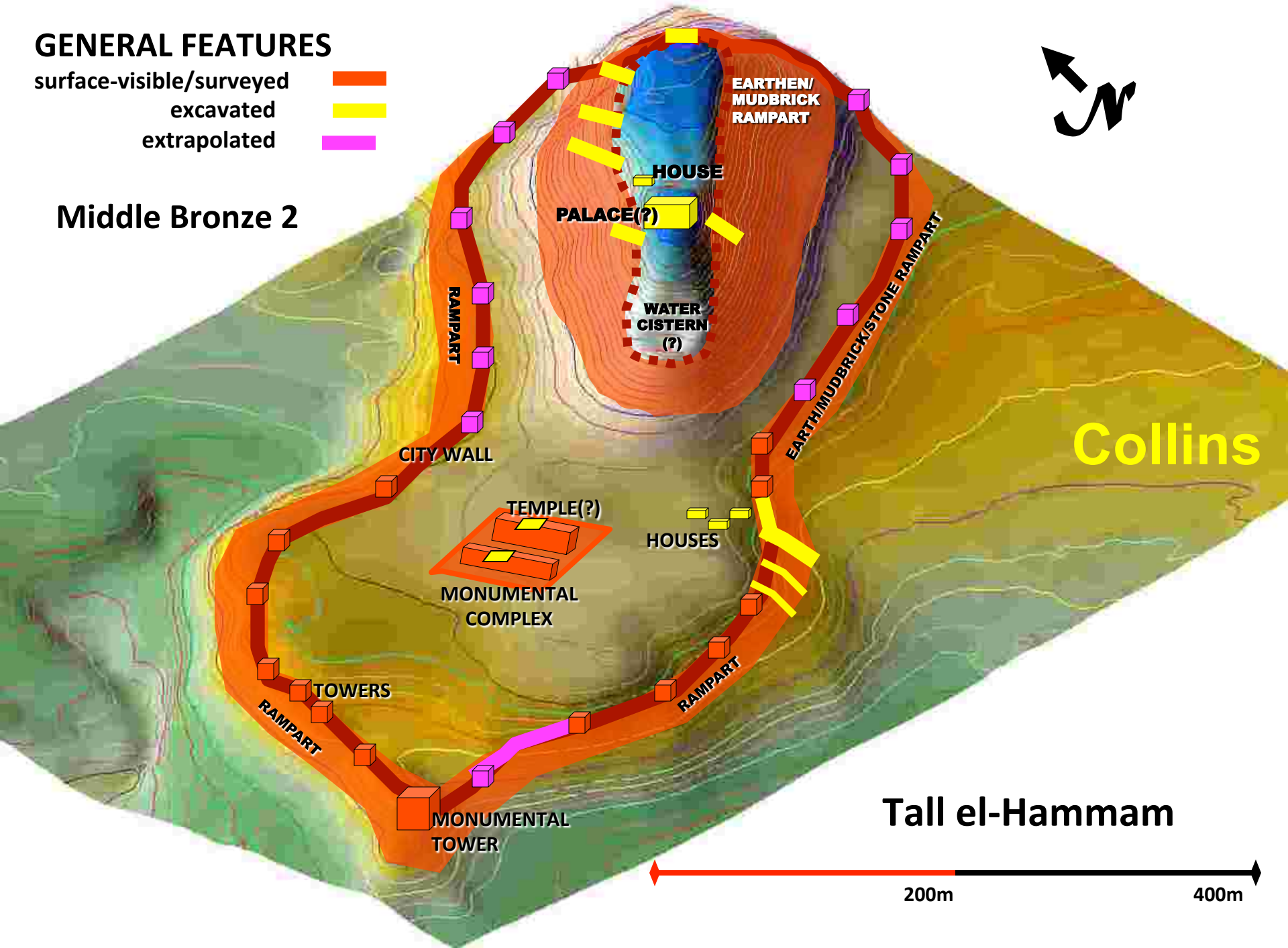
Collins

GENERAL FEATURES

surface-visible/surveyed
excavated
extrapolated



Middle Bronze 2



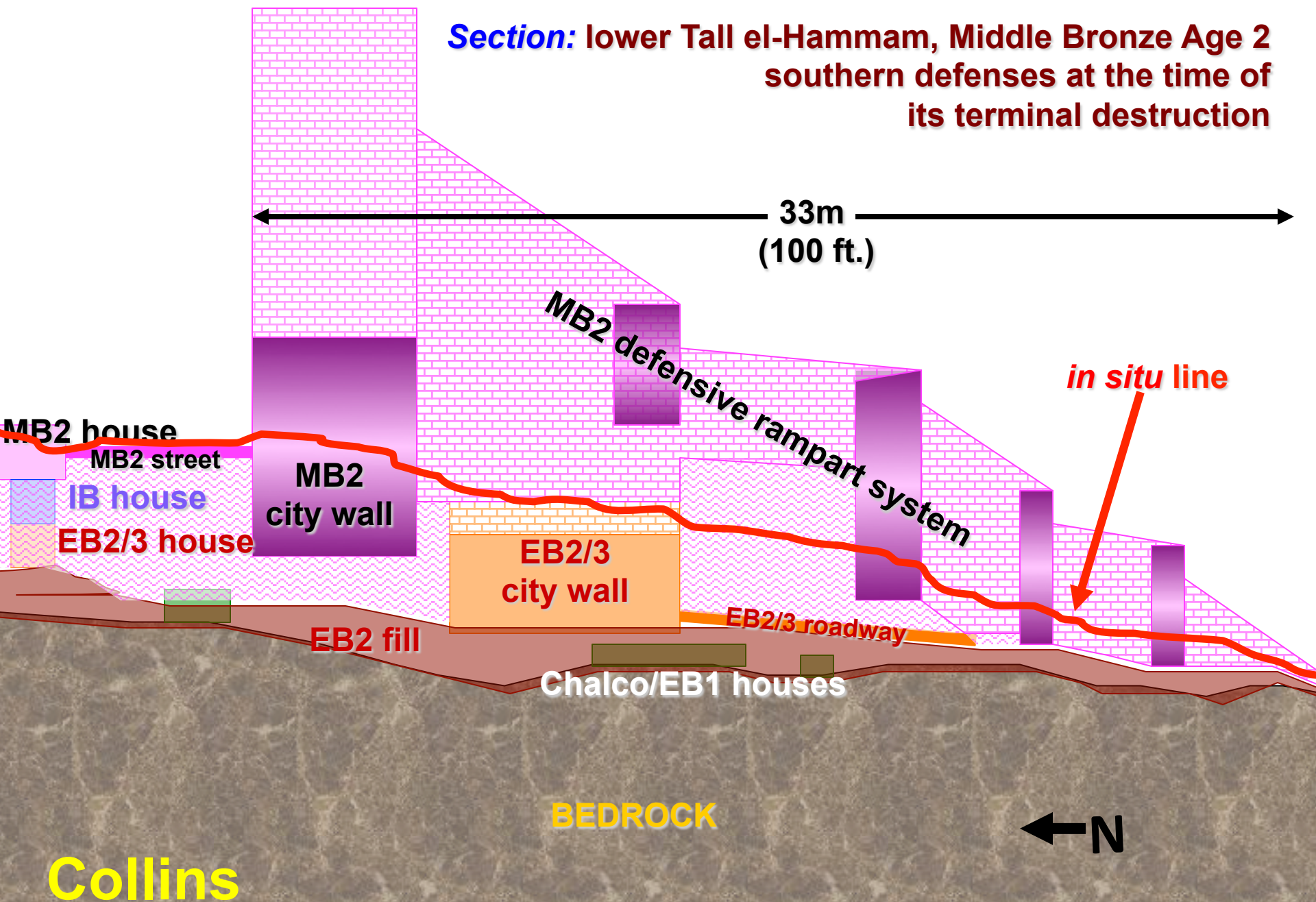
Collins

Tall el-Hammam

200m

400m

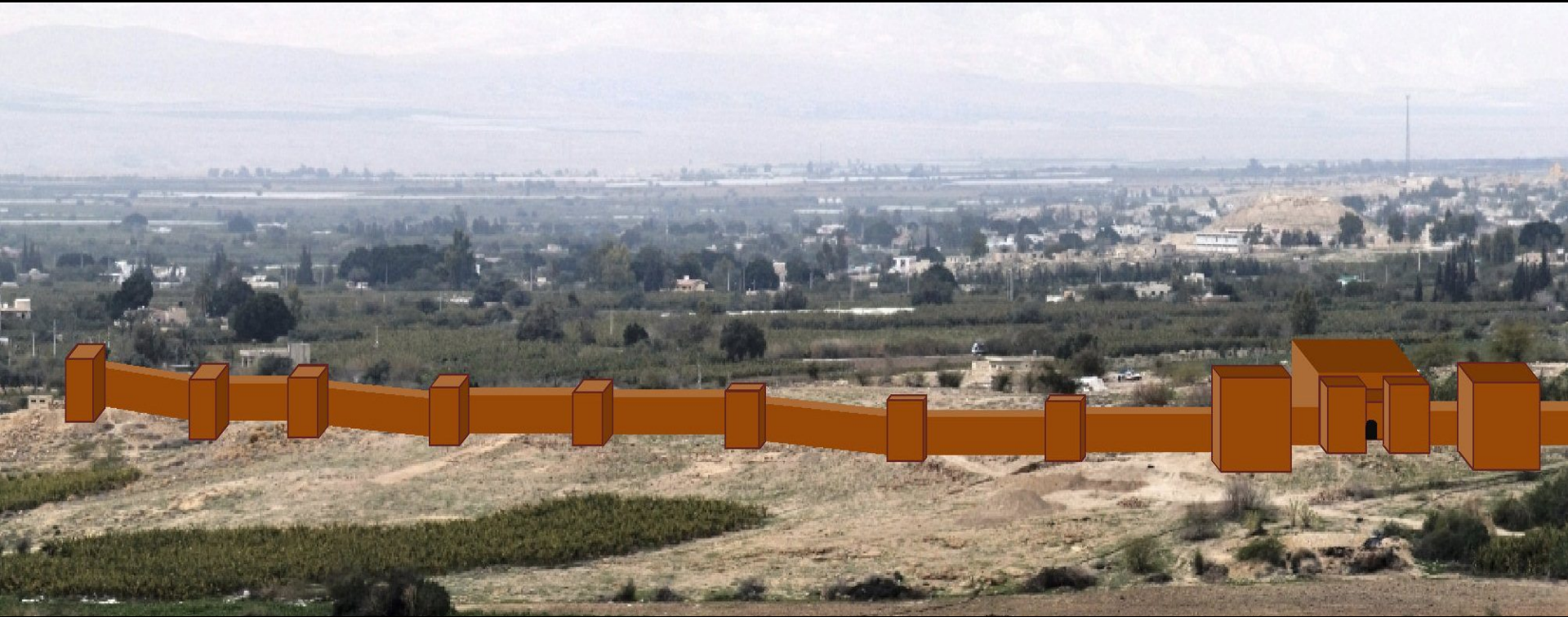
**Section: lower Tall el-Hammam, Middle Bronze Age 2
southern defenses at the time of
its terminal destruction**



Collins



Collins



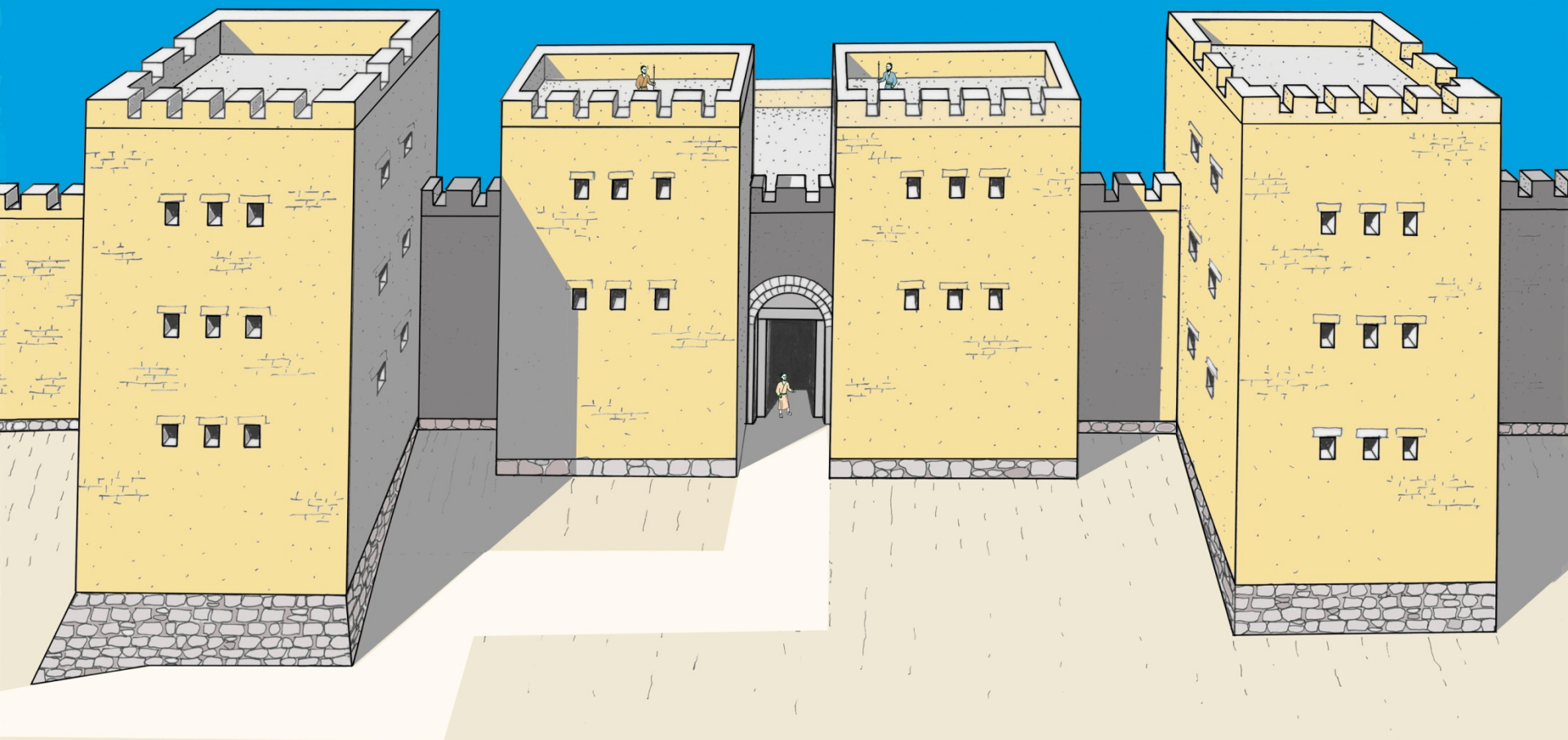
Collins



Collins



Collins



Tall el-Hammam

Reconstruction of the MB gate

L. Ritmeyer

Collins

Tall el-Hammam 2007 Season

TeH Stratum MB2

**a full
meter of
ash and
destruction
debris**

Collins





MB pottery sherd

TRINITITE

Collins

OUTLINE

- c. Superior Order** **7**
- 1) High Significance of Mel.** **7:1-3**
 - a) His High Position** **7:1a**
 - b) His Encounter with Abram** **7:1b-2a**
 - c) His High Priority** **7:2b**

7:1 For this Melchizedek, king of Salem, priest of the Most High God, who met Abraham as he was returning from the slaughter of the kings and blessed him, 2 to whom also Abraham apportioned a tenth part of all the spoils, was first of all, by the translation of his name, king of righteousness, and then also king of Salem, which is king of peace.

PARALLELS

- 1. King**
- 2. Priest**
- 3. Source of
blessing**
- 4. Worshiped**
- 5. Preeminent**

7:1 For this Melchizedek, king of Salem, priest of the Most High God, who met Abraham as he was returning from the slaughter of the kings and blessed him, 2 to whom also Abraham apportioned a tenth part of all the spoils, was first of all, by the translation of his name, king of righteousness, and then also king of Salem, which is king of peace.

TERMS

1. Salem - shalom (שלם) = peace
2. El Elyon - God Most High
3. Melchizedek - melek + tsadeq
4. Melek (מלך) - king
5. Tsadeq (צדק) - righteousness

PARALLELS

- | | |
|----------------------|---------------------------|
| 1. King | 6. Basis of |
| 2. Priest | righteousness |
| 3. Source of | 7. Source of peace |
| blessing | |
| 4. Worshiped | |
| 5. Preeminent | |

OUTLINE

- c. Superior Order** **7**
- 1) High Significance of Mel.** **7:1-3**
 - a) His High Position** **7:1a**
 - b) His Encounter with Abram** **7:1b-2a**
 - c) His High Priority** **7:2b**
 - d) His Abiding Permanence** **7:3**

7:3 Without father, without mother, without genealogy, having neither beginning of days nor end of life, but made like the Son of God, he remains a priest perpetually.

PARALLELS

- | | |
|----------------------|---------------------------|
| 1. King | 6. Basis of |
| 2. Priest | righteousness |
| 3. Source of | 7. Source of peace |
| blessing | 8. Eternal |
| 4. Worshiped | |
| 5. Preeminent | |

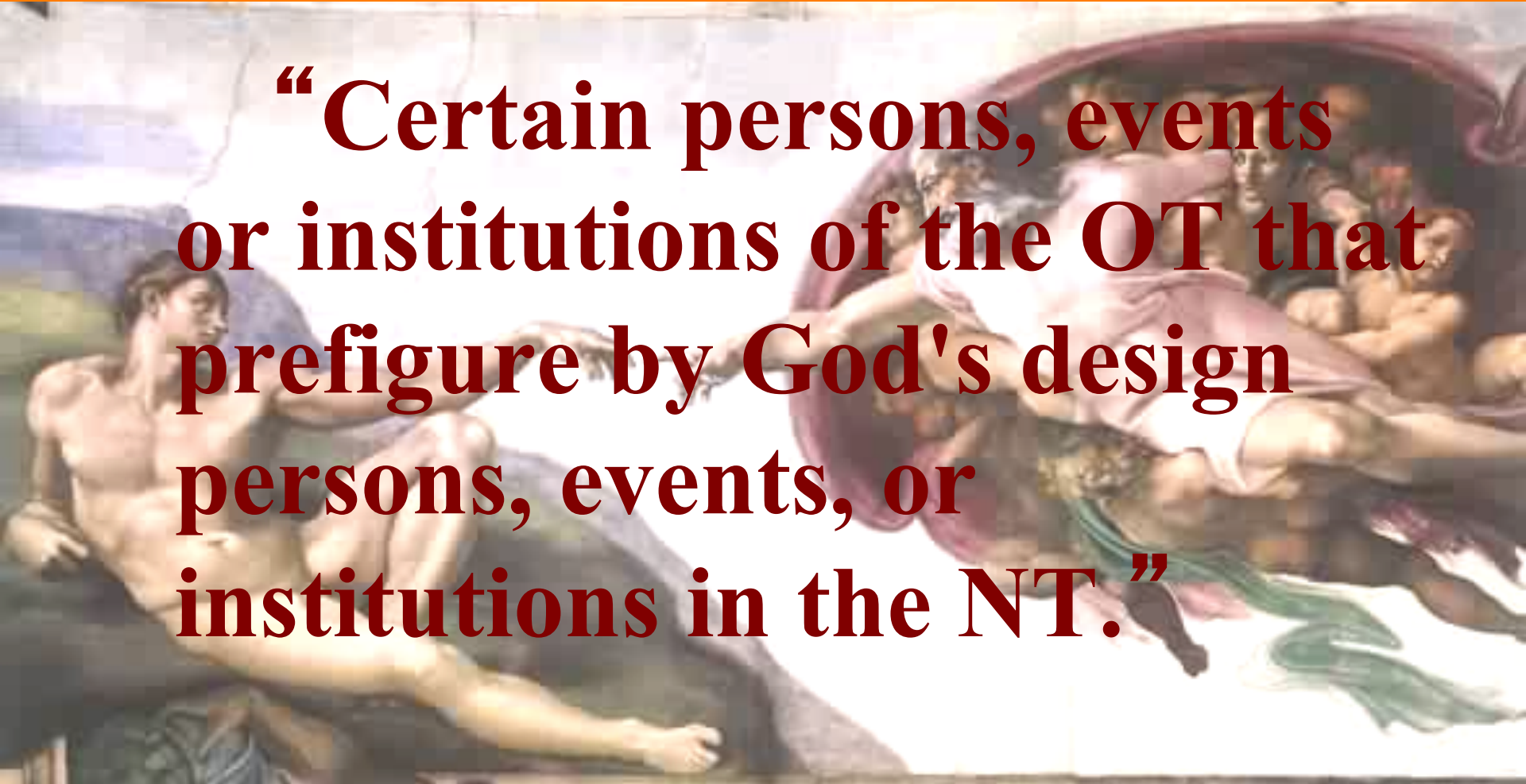
7:3 Without father, without mother, without genealogy, having neither beginning of days nor end of life, but made like the Son of God, he remains a priest perpetually.



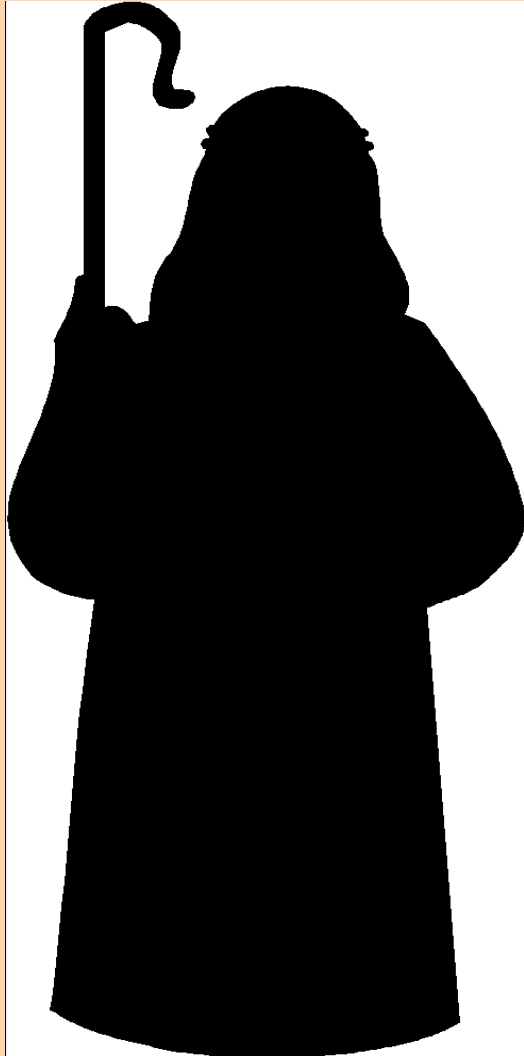
TYPOLOGA

TYPOLGY

“Certain persons, events or institutions of the OT that prefigure by God's design persons, events, or institutions in the NT.”



CHARACTERISTICS



- 1. Resemblance**
- 2. Prefiguring**
- 3. Design**
- 4. Historical**
- 5. Heightening**
- 6. Designated**

TYPES

✧ Persons

