

SCIENCE &

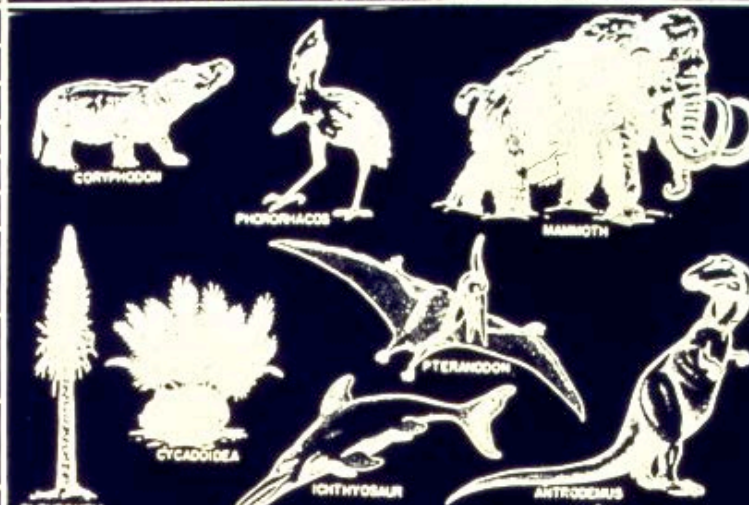


SCRIPTURE

CREATION VS EVOLUTION



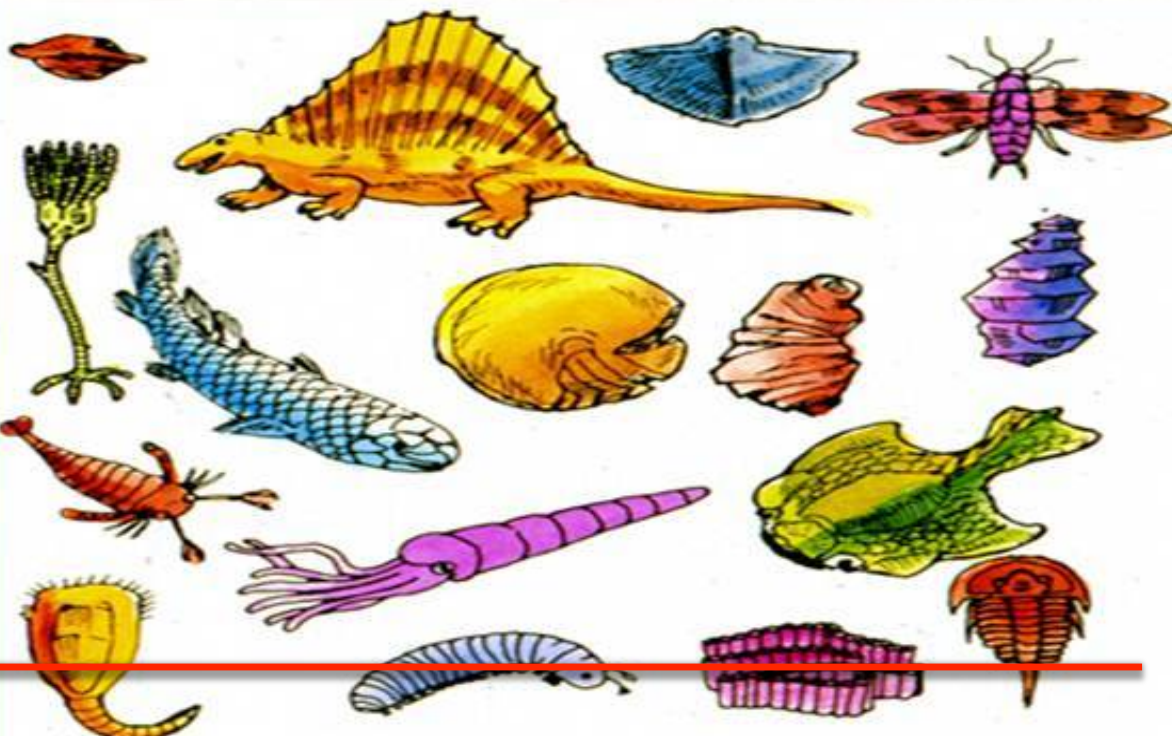
➤ Introduction & Evidence



- Introduction
- Paleontology
- Geology

ERA	PERIOD	MILLIONS OF YEARS		TYPICAL PLANTS AND ANIMALS
		START	DURATION	
CENOZOIC	PLEISTOCENE	1	1	
	PLIOCENE	11	10	
	MIOCENE	25	14	
	OLIGOCENE	40	15	
	EOCENE	60	20	
	PALEOCENE	70	10	
MESOZOIC	CRETACEOUS	135	65	
	JURASSIC	180	45	
	TRIASSIC	225	45	
PALEOZOIC	PERMIAN	270	55	
	PENNSYLVANIAN	310	40	
	MISSISSIPPIAN	350	40	
	DEVONIAN	400	50	
	SILURIAN	440	40	
	ORDOVICIAN	500	60	
	CAMBRIAN	600	100	
	PRECAMBRIAN	LATE	1700	
EARLY		3440	1700	

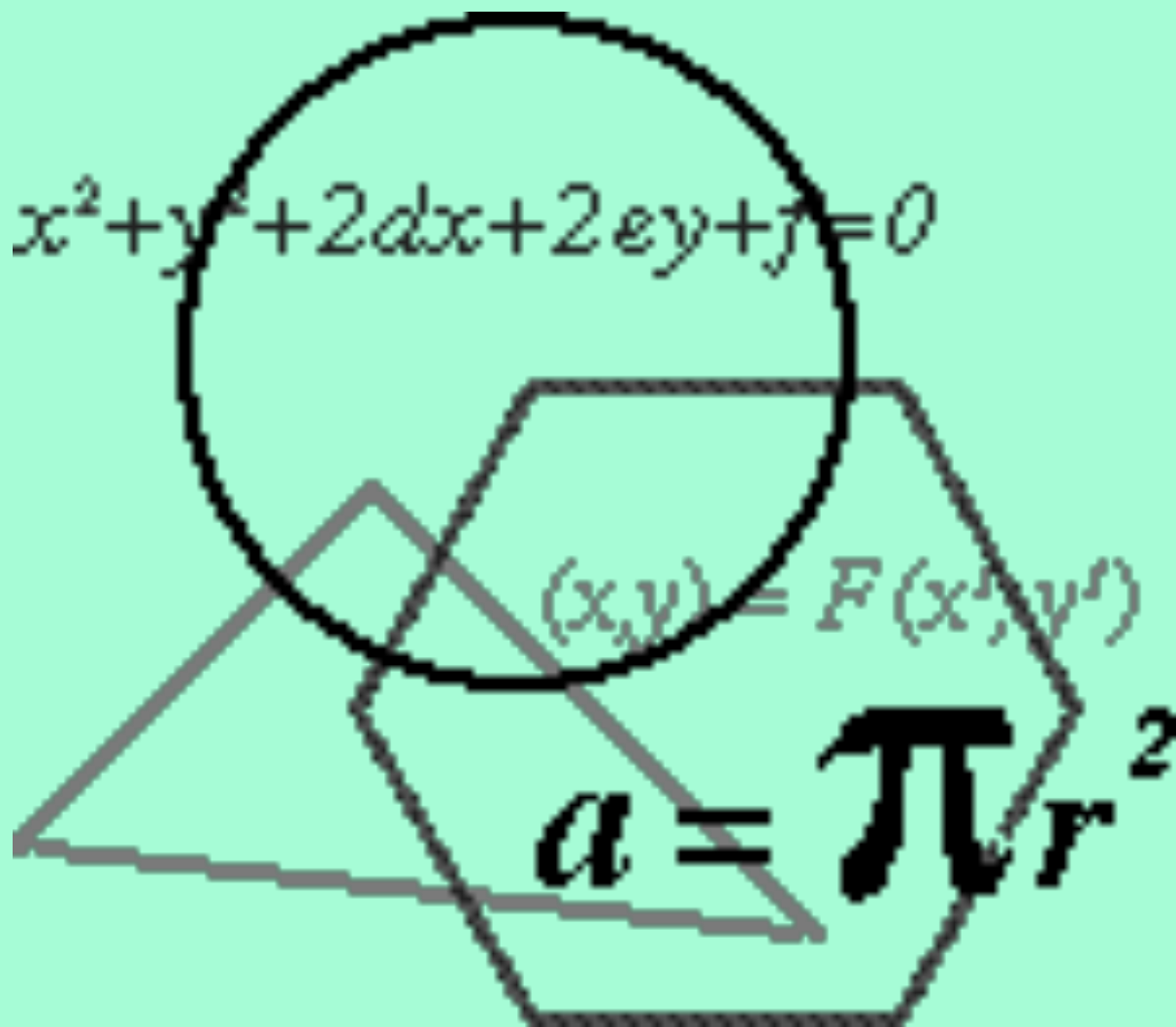
The Geologic Column

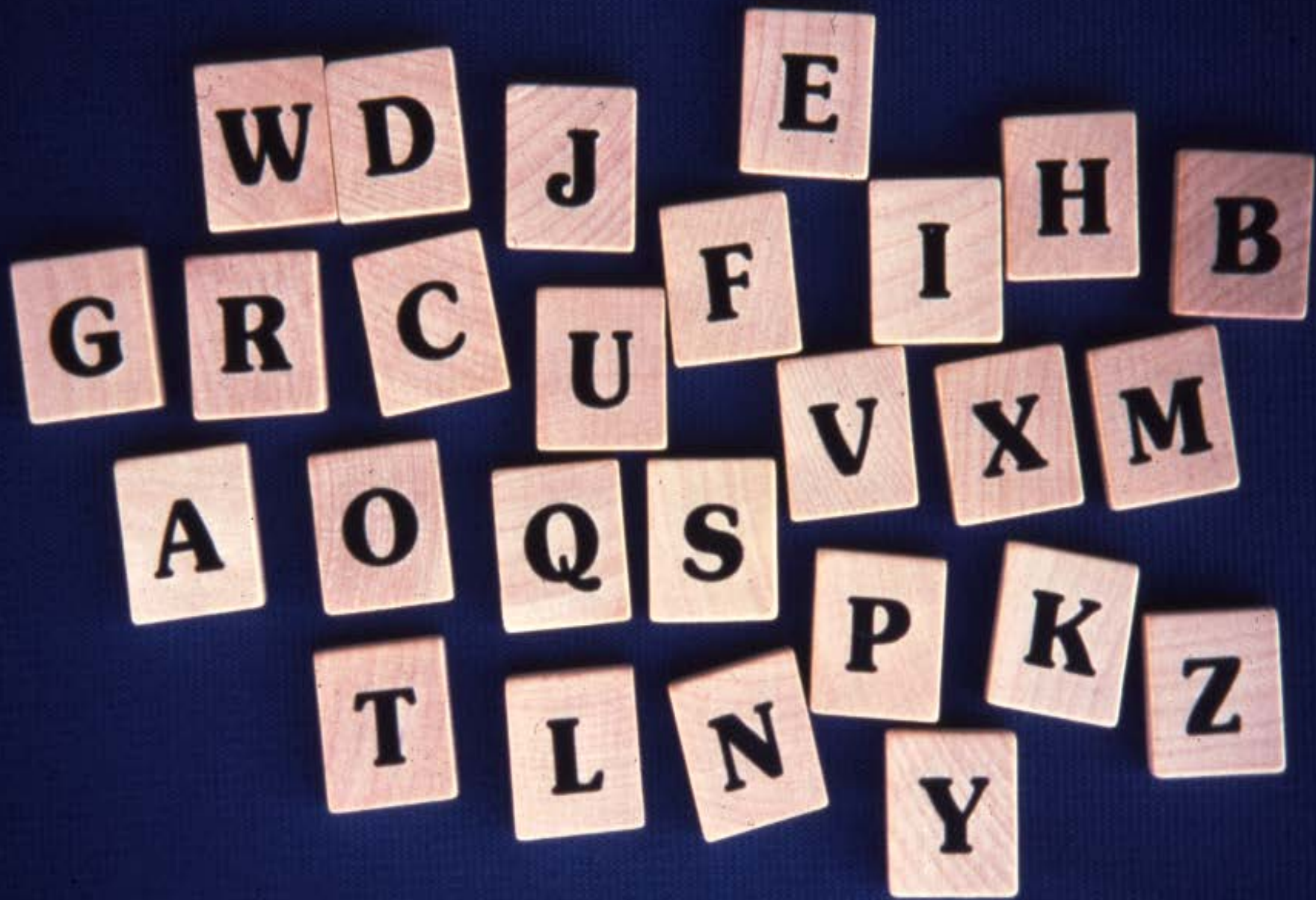
ERA	PERIOD	EPOCH	SUCCESION OF LIFE
CENOZOIC recent life	QUATERNARY 0-1 Million Years Rise of Man	Recent Pleistocene	
	TERTIARY 62 Million Years Rise of Mammals	Pliocene Miocene Oligocene Eocene	
MESOZOIC middle life	CRETACEOUS (135) 72 Million Years Modern seed bearing plants. Dinosaurs		
	JURASSIC (180) 46 Million Years First birds		
	TRIASSIC (125) 49 Million Years Cycads, first dinosaurs		
PALEOZOIC ancient life	PERMIAN (270) 50 Million Years First reptiles		
	CARBONIFEROUS		
	PENNSYLVANIAN 30 Million Years First insects		
	MISSISSIPPIAN 35 Million Years Many crinoids		
	DEVONIAN (400) 60 Million Years First seed plants, cartilage fish		
	SILURIAN 20 Million Years Earliest land animals		
	ORDOVICIAN 75 Million Years Early bony fish		
	CAMBRIAN (600) 100 Million Years Invertebrate animals, Brachiopods, Trilobites		
PRECAMBRIAN Very few fossils present (bacteria-algae-pollen?)			

- Introduction
- Paleontology
- Geology
- Mathematics

ERA	PERIOD	MILLIONS OF YEARS		TYPICAL PLANTS AND ANIMALS	
		START	DURATION		
CENOZOIC	PLEISTOCENE	1	1		
	PLIOCENE	11	10		
	MIOCENE	25	14		
	OLIGOCENE	40	15		
	EOCENE	60	20		
	PALEOCENE	70	10		
MESOZOIC	CRETACEOUS	135	65		
	JURASSIC	180	45		
	TRIASSIC	225	45		
PALEOZOIC	PERMIAN	270	55		
	PENNSYLVANIAN	310	40		
	MISSISSIPPIAN	350	40		
	DEVONIAN	400	50		
	SILURIAN	440	40		
	ORDOVICIAN	500	60		
	CAMBRIAN	600	100		
PRECAMBRIAN	LATE	1700	1100	<p>Absence of fossils of multicellular life</p>	
	EARLY	3440	1700		

MATHEMATICS







$$(1/26)^3 =$$

1 in 17,576

EVOLUTION

$$(1/26)^9 =$$

1 in 5.4 Trillion

THE THEORY OF EVOLUTION

$$(1/27)^{23} =$$

1 in 8.3^{32}

1 Protein Molecule

1 in 10^{520}

Atoms - 10^{80}

Mycoplasma Hominis H39

600 Different Proteins

Each with 400 Amino Acids

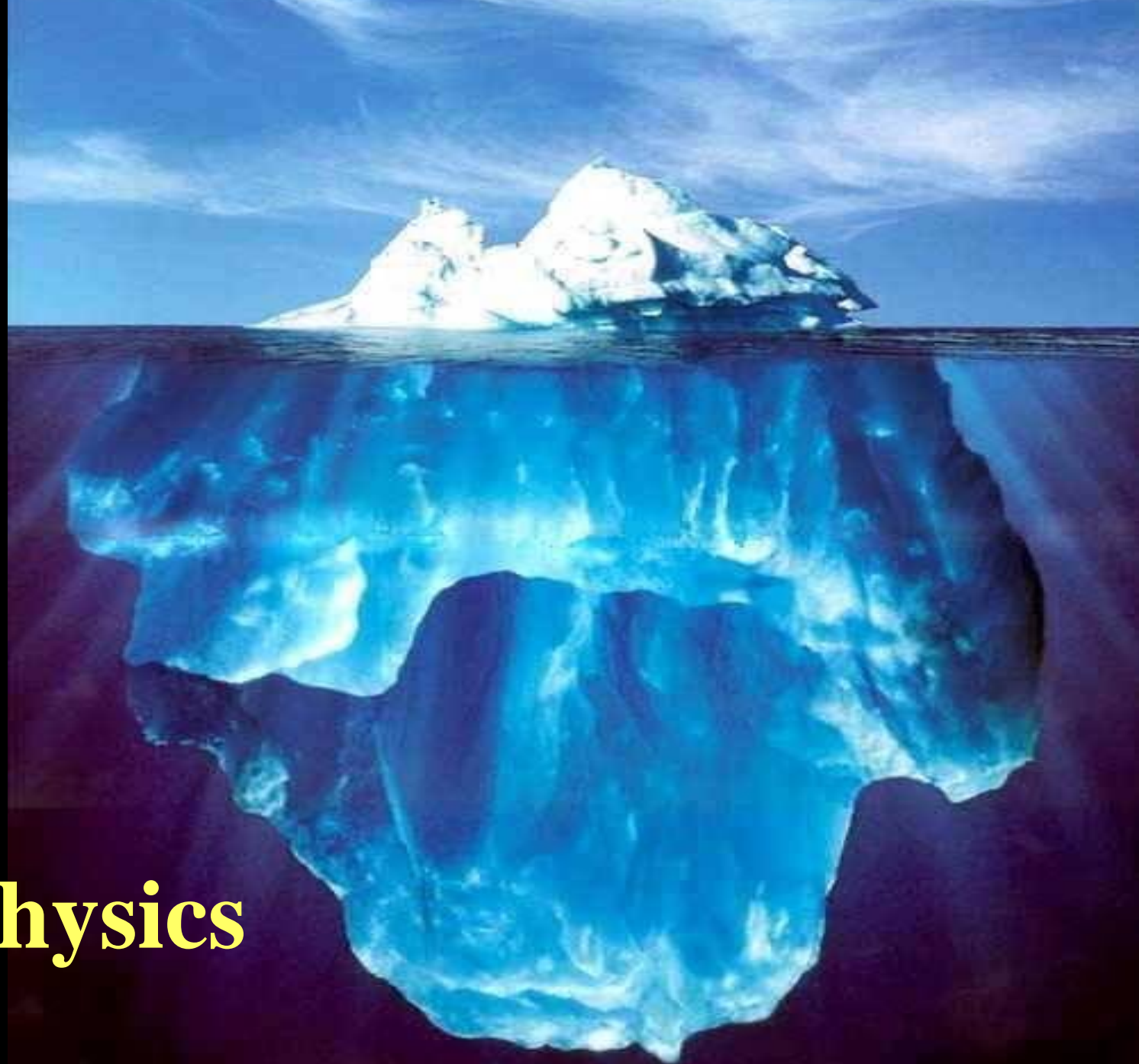
For all 600 =

1 in $10^{520 \times 600}$

CREATION VS EVOLUTION

- Introduction & Evidence
- Evidence from Physics





Physics

THERMODYNAMICS

➤ Evolution -

Principle of Innovation

Higher & Higher Complexity

➤ Thermodynamics -

Universally Accepted

No Exceptions Observed

Except True Miracles

“Thus, heat always flows spontaneously from a hotter to a colder body; gases always seep thru an opening spontaneously from a region of high pressure to a region of low pressure; gases & liquids left by themselves always tend to mix, not unmix. ... Rocks weather & crumble; iron rusts; people grow old. These are all examples of irreversible processes that take place naturally in only one direction &, by their one-sidedness, express the 2nd law of thermodynamics.”

Sears & Zemansky

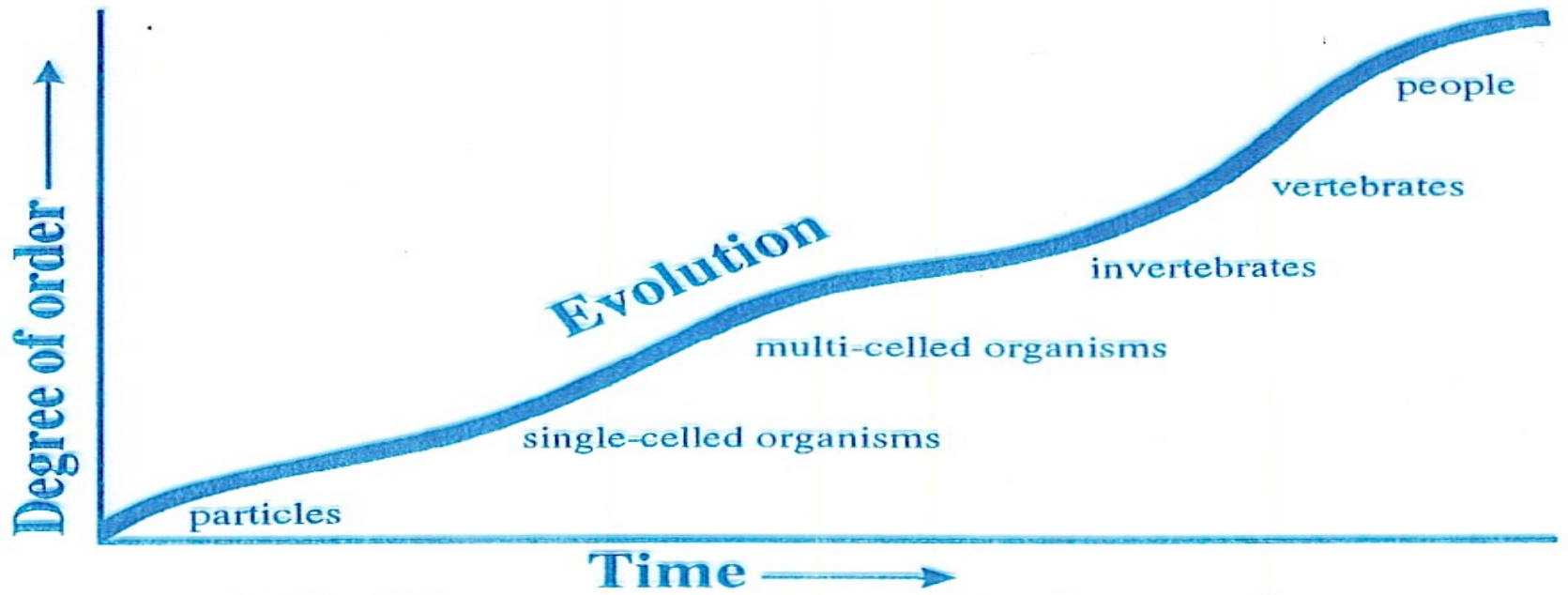
2nd LAW of Thermodynamics

- Irreversible tendency to unwind
- Movement from organization to disorganization
- Law of decay
- Isa 51:6, Ro 8:20-22

JUST OUTSIDE THE BOX



Mum, you can't fight the 2nd law of thermodynamics
All things, which includes bedrooms, move from a state of order
to disorder

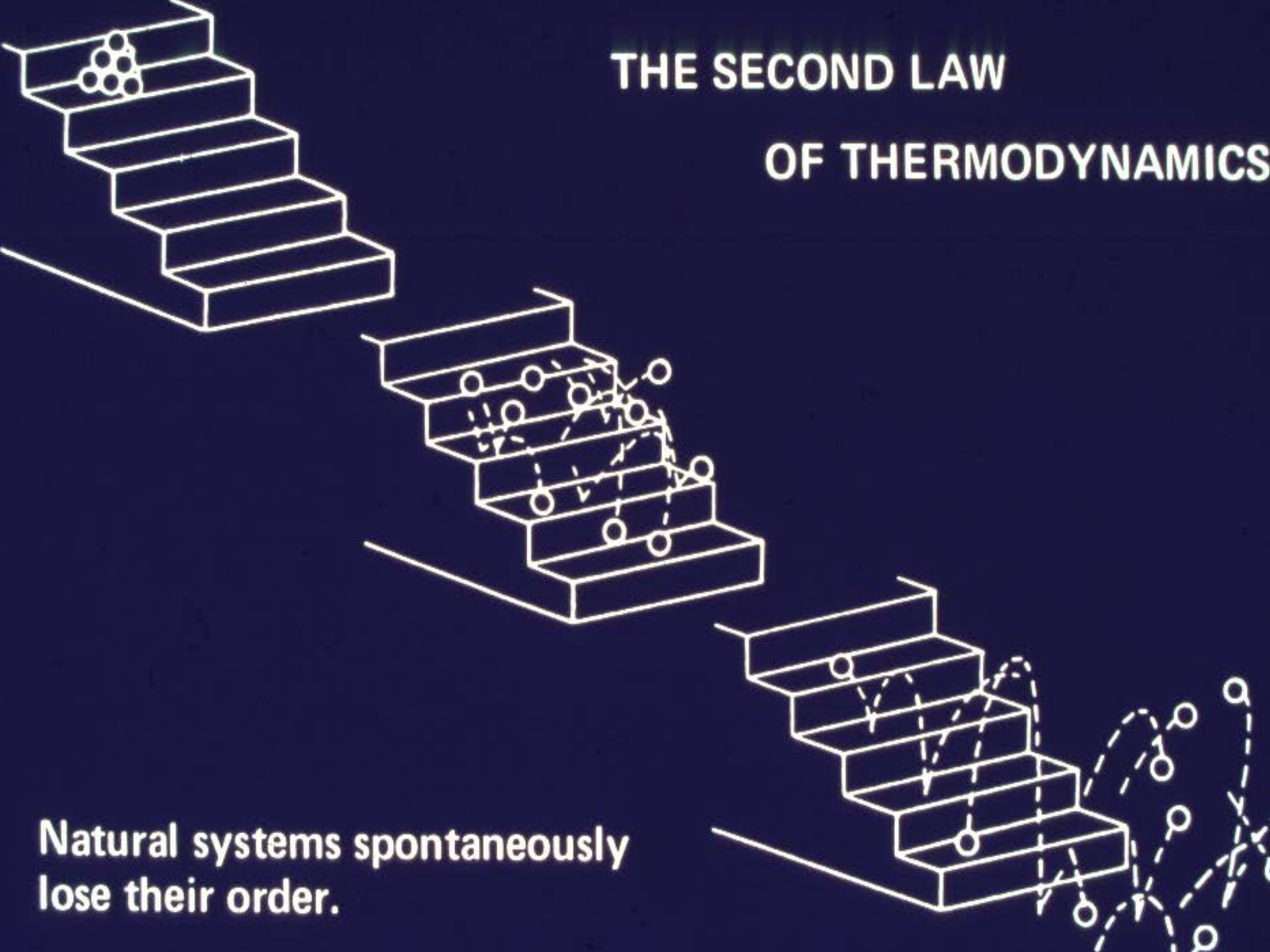


(a) Evolution proposes an increase in order over time.



THE SECOND LAW

OF THERMODYNAMICS



Natural systems spontaneously lose their order.





**After a
Million Years?**

After 10 Million Years?



Ps 102:25-26 “Of old You founded the earth, And the heavens are the work of Your hands.

26 “Even they will perish, but You endure; And all of them will wear out like a garment; Like clothing You will change them and they will be changed.

Rom 8:20-22 For the creation was subjected to futility, not willingly, but because of Him who subjected it, in hope 21 that the creation itself also will be set free from its slavery to corruption into the freedom of the glory of the children of God. 22 For we know that the whole creation groans and suffers the pains of childbirth together until now.

CREATION VS EVOLUTION

- **Introduction & Evidence**
- **Evidence from Physics**
- **Evidence from  Biology**

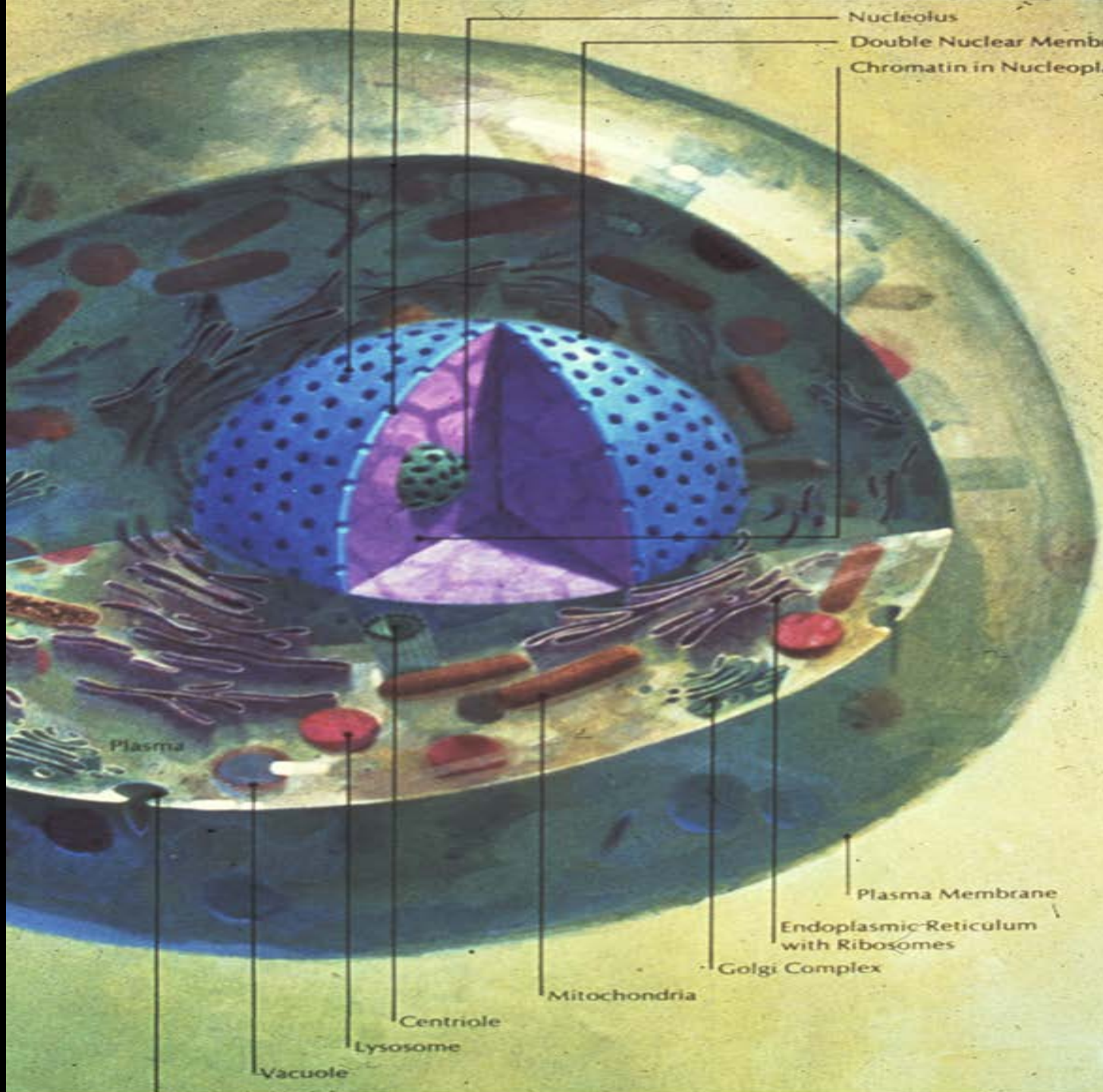




Genetics

Evidence of Design

Evolution - Life began in Simple Form



Nucleolus
Double Nuclear Membrane
Chromatin in Nucleoplasm

Plasma

Plasma Membrane

Endoplasmic Reticulum
with Ribosomes

Golgi Complex

Mitochondria

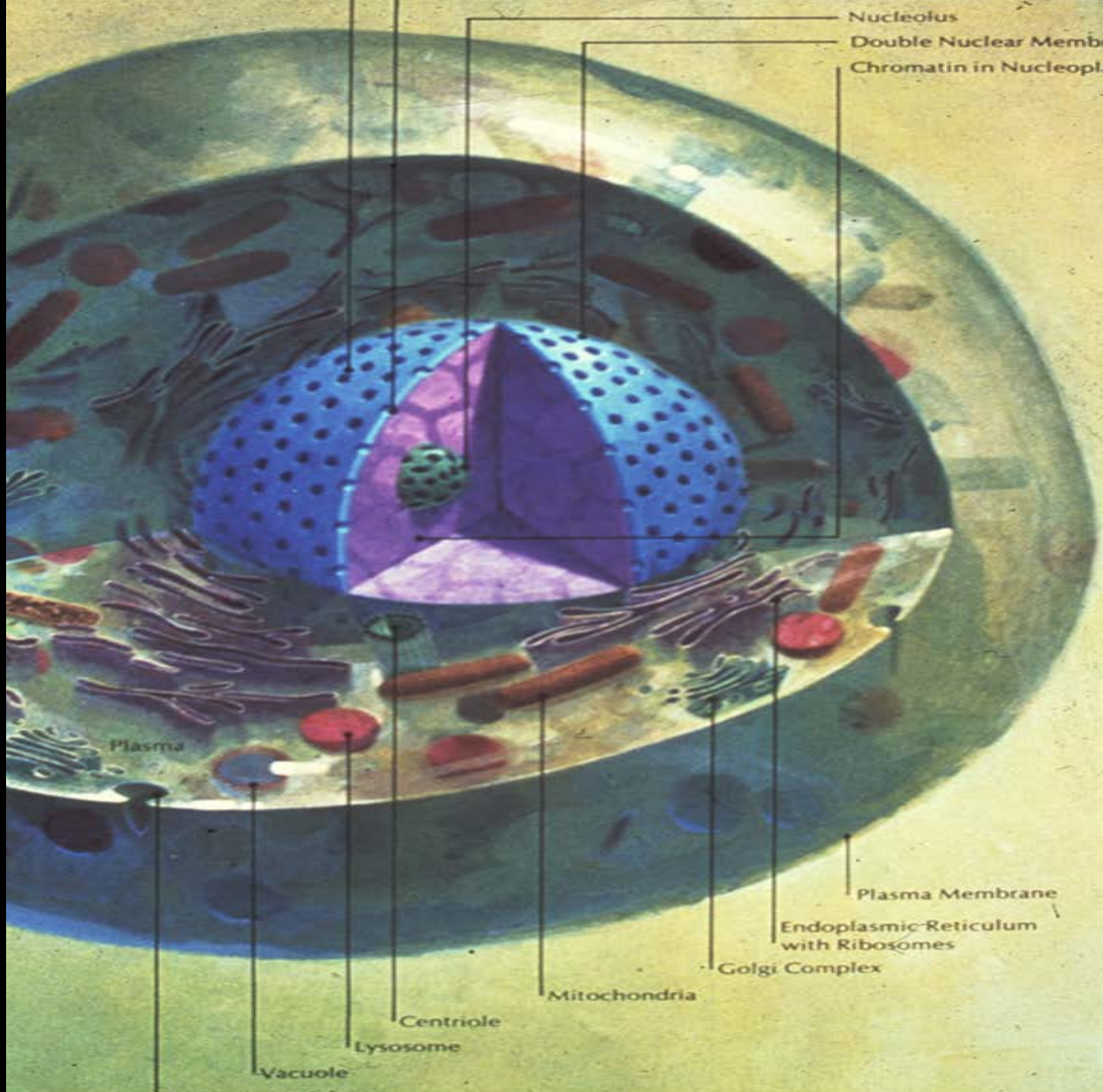
Centriole

Lysosome

Vacuole

1 CELL

- ✓ DNA
- ✓ RNA
- ✓ Mitochondrion
- ✓ ATP
- ✓ Polysaccharides
- ✓ Cyclic AMP
- ✓ Ribosomes
- ✓ Lysosomes
- ✓ Lipids
- ✓ Porphyrins
- ✓ Proteins
- ✓ Amino Acids



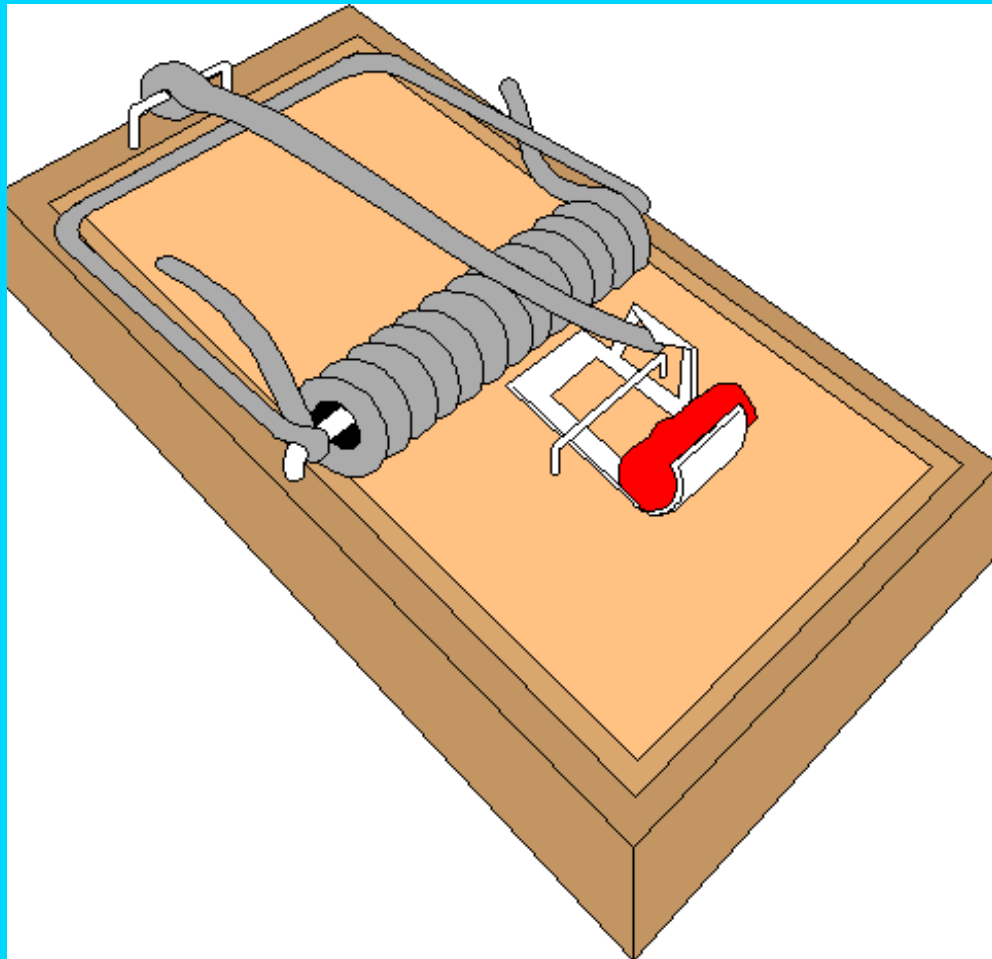
Nucleolus
Double Nuclear Membrane
Chromatin in Nucleoplasm

Plasma

Plasma Membrane
Endoplasmic Reticulum
with Ribosomes
Golgi Complex

Vacuole
Lysosome
Centriole
Mitochondria

IRREDUCIBLE COMPLEXITY



- ✓ Base
- ✓ Holding Bar
- ✓ Spring
- ✓ Hammer
- ✓ Catch

Michael Behe

“The cumulative result shows with piercing clarity that life is based on ***machines***—machines made of molecules!”

Michael Behe

“Molecular biology has shown that even the simplest of all living systems on earth today, bacterial cells, are exceedingly **complex objects. ... far **more complicated** than anything built by man ...”**

Michael Denton

CONCLUSION

➤ **Evolution -**

Positive Evidence is Superficial

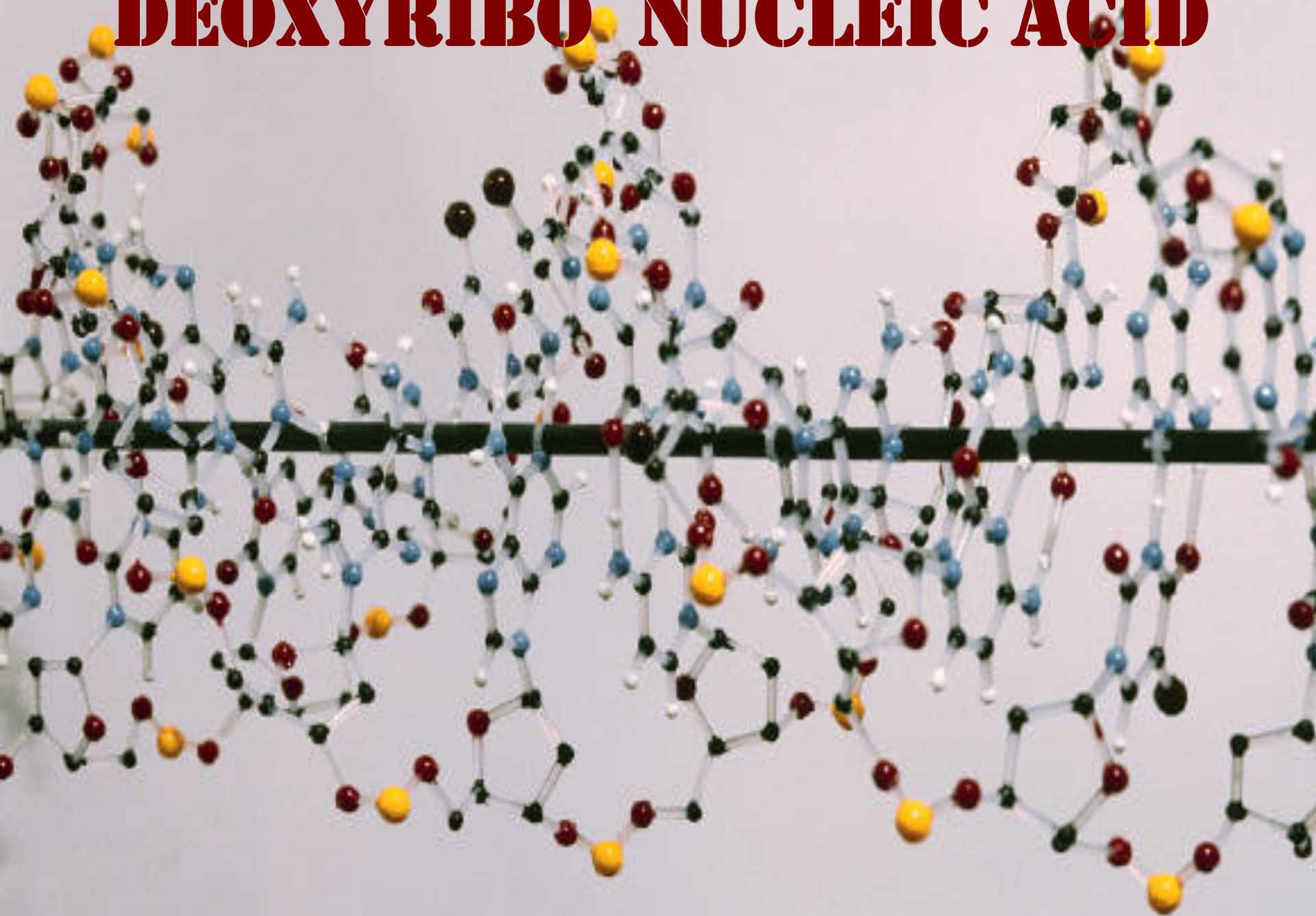
Real Science Destroys Theory

➤ **Creation –**

Science Supports Intelligent Design

Science Supports Biblical Worldview

DEOXYRIBO NUCLEIC ACID

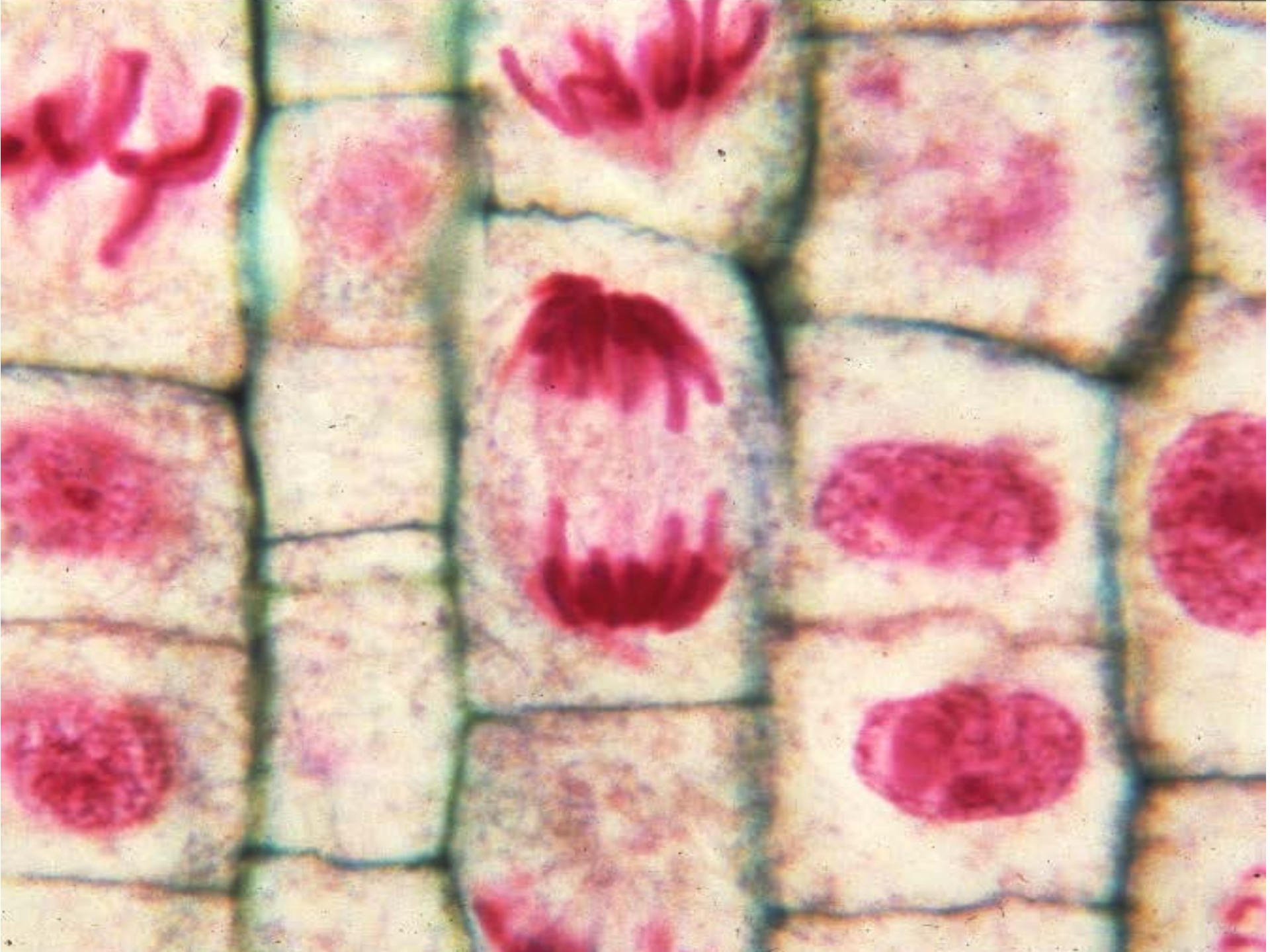


DNA



- Double Helix Chains
- Library in Molecule
- All Characteristics

- More Info Stored than any Other Known System

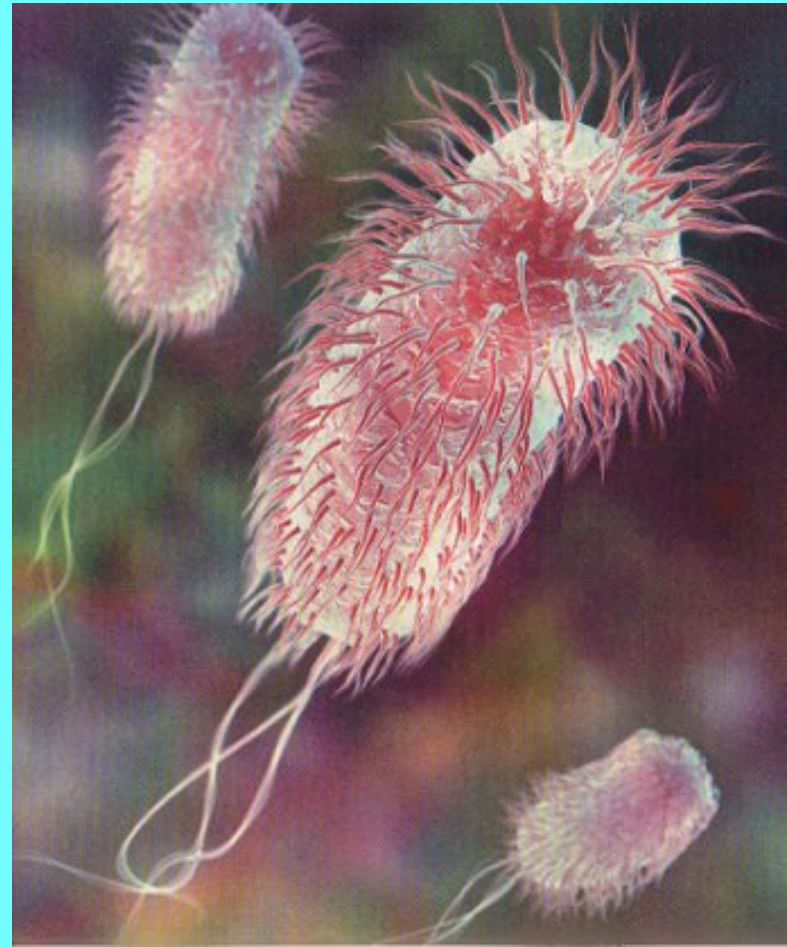


DNA LIBRARY

Escherichia coli - ~ 3 million

3-letter codons

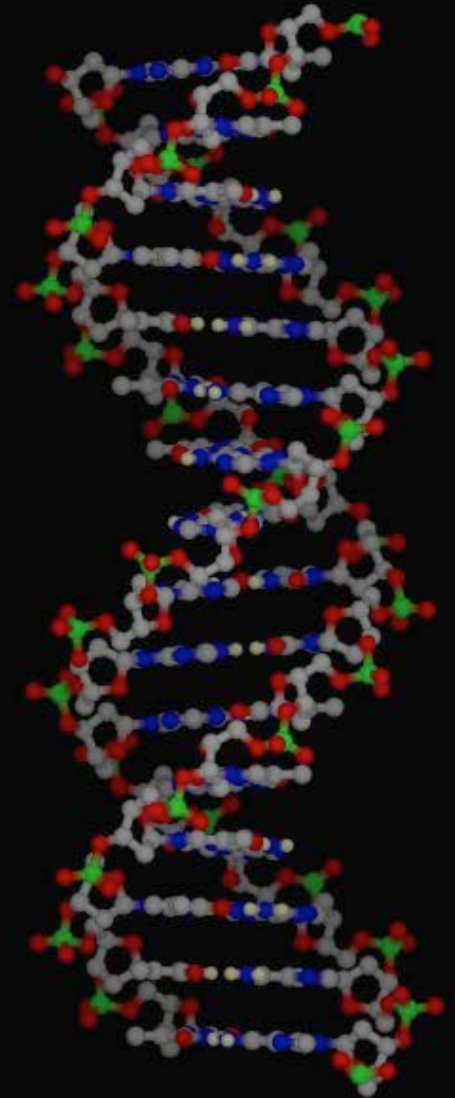
**= 3 volumes of
1,000 pages at
1,000 words/page**



DNA LIBRARY

**Human - ~ 2 billion
3-letter codons**

**= 2,000 volumes of
1,000 pages at
1,000 words/page**



Complexity Everywhere



**2-3,000
Eggs/Day**



**Colony = 1 Queen &
60,000 Workers**

WORKERS

1. Sanitation

2. Dietician



3. Manufacturing

4. Construction

5. Security

6. R & D

INTELLIGENT DESIGN

At All
Levels
Everywhere



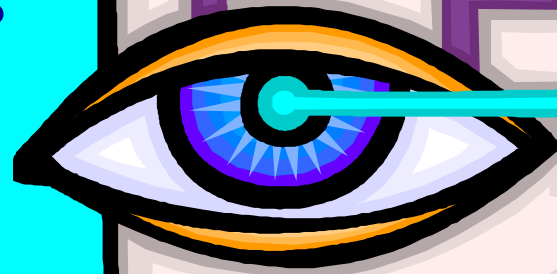
HUMAN BODY

➤ **12 Billion
Brain Cells**



➤ **10 Trillion
Body Cells**

HUMAN EYE



**Sensitive to 6
Quanta of Light**

MORE EXAMPLES

- 1. Ants that Eat Junk Food**
- 2. Molds that Eat Animals**
- 3. Beetles with Big Guns**
- 4. Moths with Ear Problems**
- 5. Carnivorous Plants**

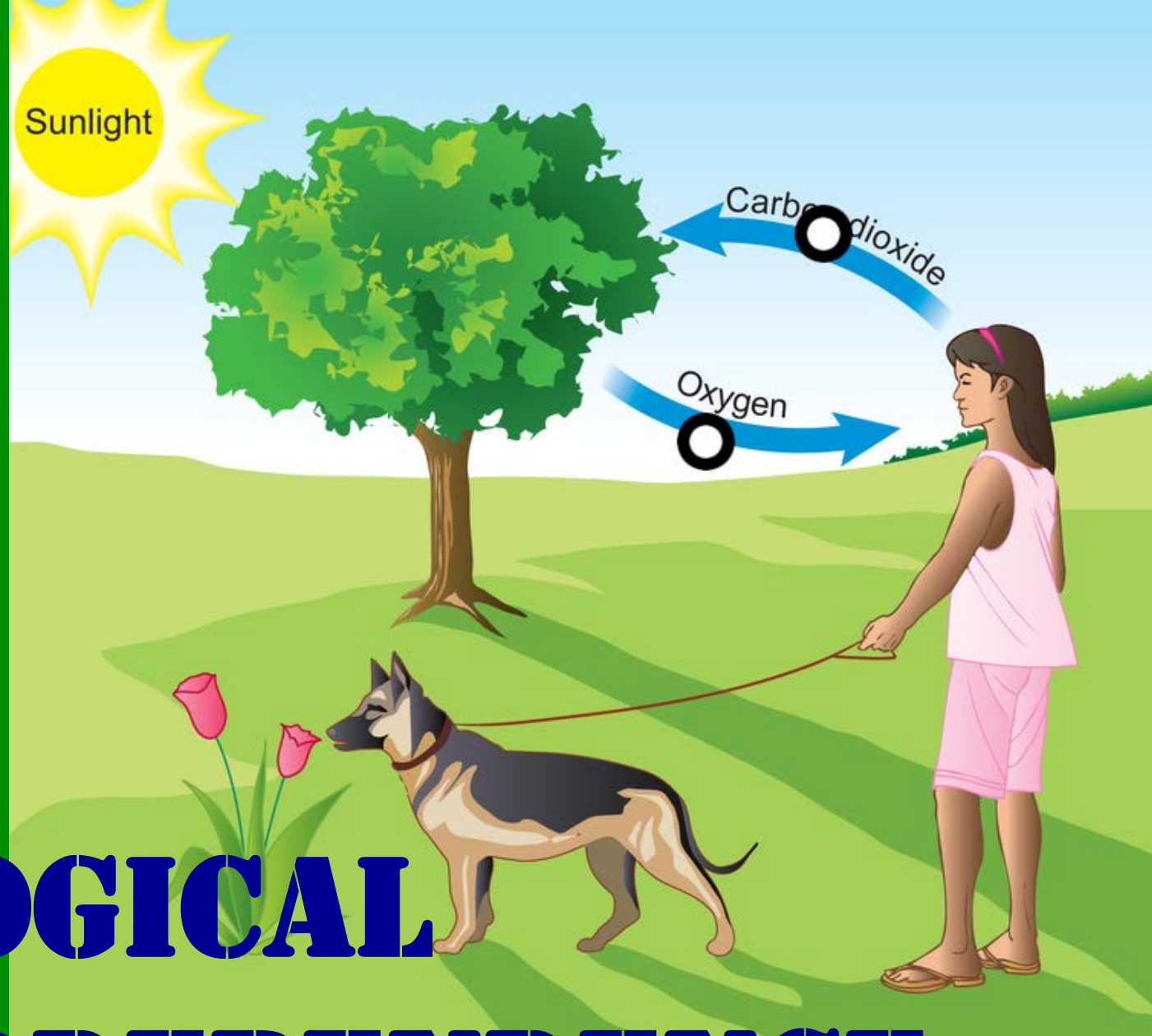
CREATION VS EVOLUTION

- **Introduction & Evidence**
- **Evidence from Physics**
- **Evidence from  Biology**
- **Anthropocentric Principle**

ANTHROPOCENTRIC PRINCIPLE

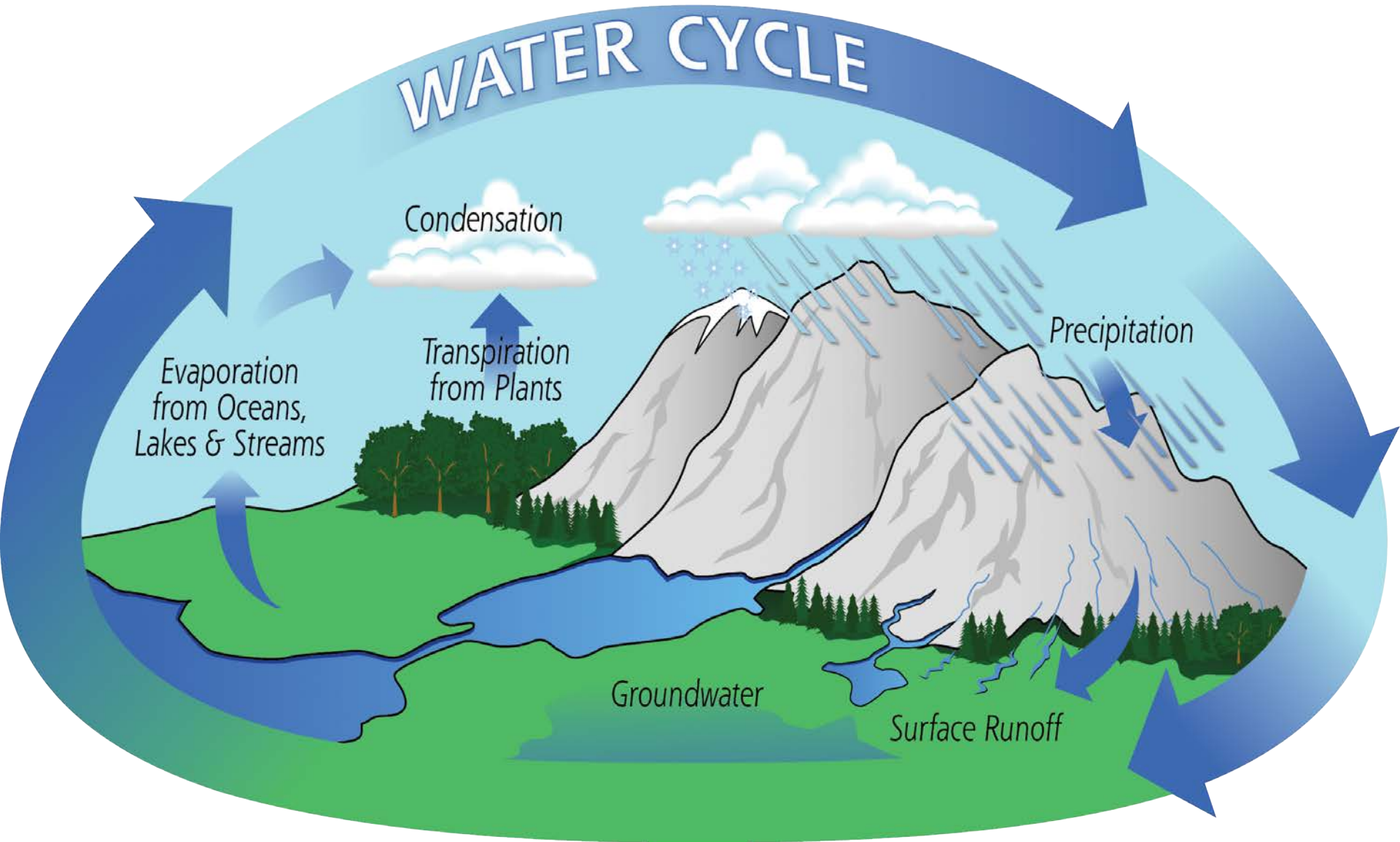
“... everything about the universe tends toward man, toward making life possible & sustaining it.”

H. Ross




ECOLOGICAL INTERDEPENDENCE

HYDROLOGIC BALANCE



CREATION VS EVOLUTION

- **Introduction & Evidence**
- **Evidence from Physics**
- **Evidence from  Biology**
- **Anthropocentric Principle**
- **Evidence from Cause & Effect**

CAUSE & EFFECT

- **Fundamental Premise**
- **Relates All to Phenomenon**
- **No Effect Greater than Cause**
- **Implies a Primary Cause**

1st CAUSE

- ✓ **Limitless Space**
- ✓ **Endless Time**
- ✓ **Boundless Energy**
- ✓ **Interrelationships**
- ✓ **Incredible Complexity**
- ✓ **Spiritual Values**
- ✓ **Human Responsibility**
- ✓ **Human Life**
- ✓ **Infinite**
- ✓ **Eternal**
- ✓ **Omnipotent**
- ✓ **Omnipresent**
- ✓ **Omniscient**
- ✓ **Spiritual**
- ✓ **Volitional**
- ✓ **Living**

CREATION VS EVOLUTION

- **Introduction & Evidence**
- **Evidence from Physics**
- **Evidence from  Biology**
- **Anthropocentric Principle**
- **Evidence from Cause & Effect**
- **Evidence from Scripture**

CONCLUSION

➤ **Evolution -**

Positive Evidence is Superficial

Real Science Destroys Theory

➤ **Creation -**

Science Supports Intelligent Design

Science Supports Biblical Worldview