

# **CAUTION**

**This Grace Group contains explicit BIBLICAL content. It contains graphic expressions of PRAYER. The language may not be suitable for visitors offended by non-profane references to JESUS. You are strongly cautioned that your flesh may be in serious danger.**

# ROMANS



Revelation of  
Truth - 1:20

Colosseum

# Forum Arch of Severus, Temple of Saturn

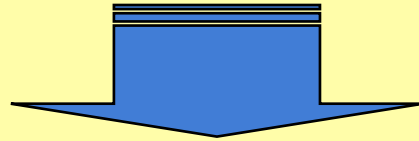


# OUTLINE

- I. Introduction 1:1-17**
- II. Prov. of God's Righteousness 1:18-8:39**
  - A. Condemnation 1:18-3:20**
    - 1. Guilt of Humanity 1:18-32**
      - a. Rejection of God 1:18-23**
        - 1) Revelation & Reason for God's Wrath 1:18-19**
        - 2) Rev. & Rejection of God 1:20-21**

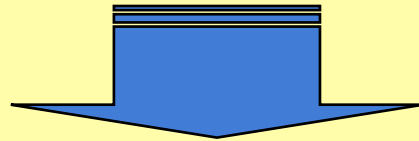
**Man under  
God's Wrath**

**1:18**



**Reasons  
For Wrath**

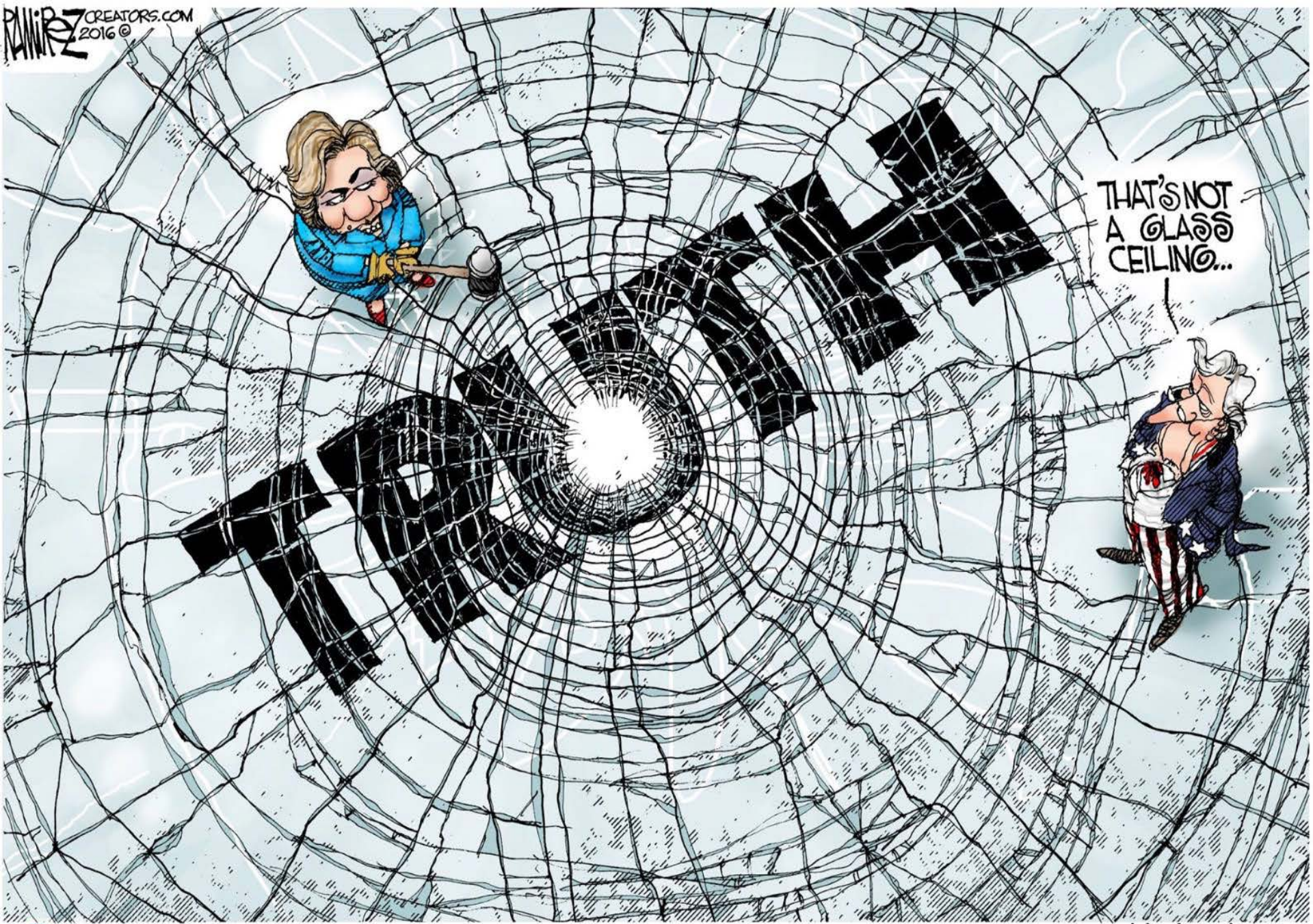
**1:19-23**



**God Rendering  
Wrath**

**1:24-32**

**1:18-19 For the wrath of God is revealed from heaven against all ungodliness and unrighteousness of men who suppress the truth in unrighteousness, 19 because that which is known about God is evident within them; for God made it evident to them.**



THAT'S NOT  
A GLASS  
CEILING...

**1:20 For since the creation of the world His invisible attributes, His eternal power and divine nature, have been clearly seen, being understood through what has been made, so that they are without excuse.**



**1:20 For since the creation of the world His invisible attributes, His eternal power and divine nature, have been clearly seen, being understood through what has been made, so that they are without excuse.**

**1:20 For since the creation of the world His invisible attributes, His eternal power and divine nature, have been clearly seen, being understood through what has been made, so that they are without excuse.**

**1:20 For since the creation of the world His invisible attributes, His eternal power and divine nature, have been clearly seen, being understood through what has been made, so that they are without excuse.**

# REVELATION

➤ **Extent - since creation**

# GENERAL REVELATION

- 1. Tendency - 1:18      suppression**
- 2. Truth -      1:19      knowable**
- 3. Clear -      evident**
- 4. Internal -      2:14-15      conscience**
- 5. Understood - 1:19      implanted**
- 6. Constant - 1:20      creation**

**1:20 For since the creation of the world His invisible attributes, His eternal power and divine nature, have been clearly seen, being understood through what has been made, so that they are without excuse.**

# REVELATION

- **Extent** - **since creation**
- **Incomprehensibility** - **invisible**

# INCOMPREHENSIBILITY

- His Incomprehensibility
- His Knowability

Church of  
Holy Sepulcher



# GOD'S DESIRE

Jer 9:23-24 ¶ Thus says the Lord, "Let not a wise man boast of his **wisdom**, and let not the mighty man boast of his **might**, let not a rich man boast of his **riches**; but let him who boasts boast of this, that he **understands and knows Me**, that I am the Lord who exercises lovingkindness, justice, and righteousness on earth; for **I delight** in these things," declares the Lord.

**1:20 For since the creation of the world His invisible attributes, His eternal power and divine nature, have been clearly seen, being understood through what has been made, so that they are without excuse.**

# **OMNIPOTENT POWER**

- **Diam = 865,000 mi**  
**109x earth**
- **From earth = 93 million mi**
- **Light takes 8:20 min**
- **Orbits galaxy = 240 million yrs**

# OMNIPOTENT POWER

1. Displayed in cataclysms - volcanoes
2. ... in atoms - forces
3. ... in galaxies - suns
4. ... judgments - Flood
5. ... in Christ's miracles - Act 2:22
6. ... in disciples' miracles - 15:19
7. ... in creation - 1:20

**1:20 For since the creation of the world His invisible attributes, His eternal power and divine nature, have been clearly seen, being understood through what has been made, so that they are without excuse.**

# REVELATION

- **Extent** - **since creation**
- **Incomprehensibility** - **invisible**
- **Visibility** - **clearly**

# ATTRIBUTES

- 1. Omnipotence - (above)**
- 2. Goodness - Act 14:15-17**
- 3. Self-Existence - 17:24-25**
- 4. Sovereignty - 17:26**
- 5. Personality - Ps 94:9**
- 6. Wrath - history**

**1:20 For since the creation of the world His invisible attributes, His eternal power and divine nature, have been clearly seen, being understood through what has been made, so that they are without excuse.**



# REVELATION

- **Extent -** since creation
- **Incomprehensibility -** invisible
- **Visibility -** clearly
- **Means -** creation

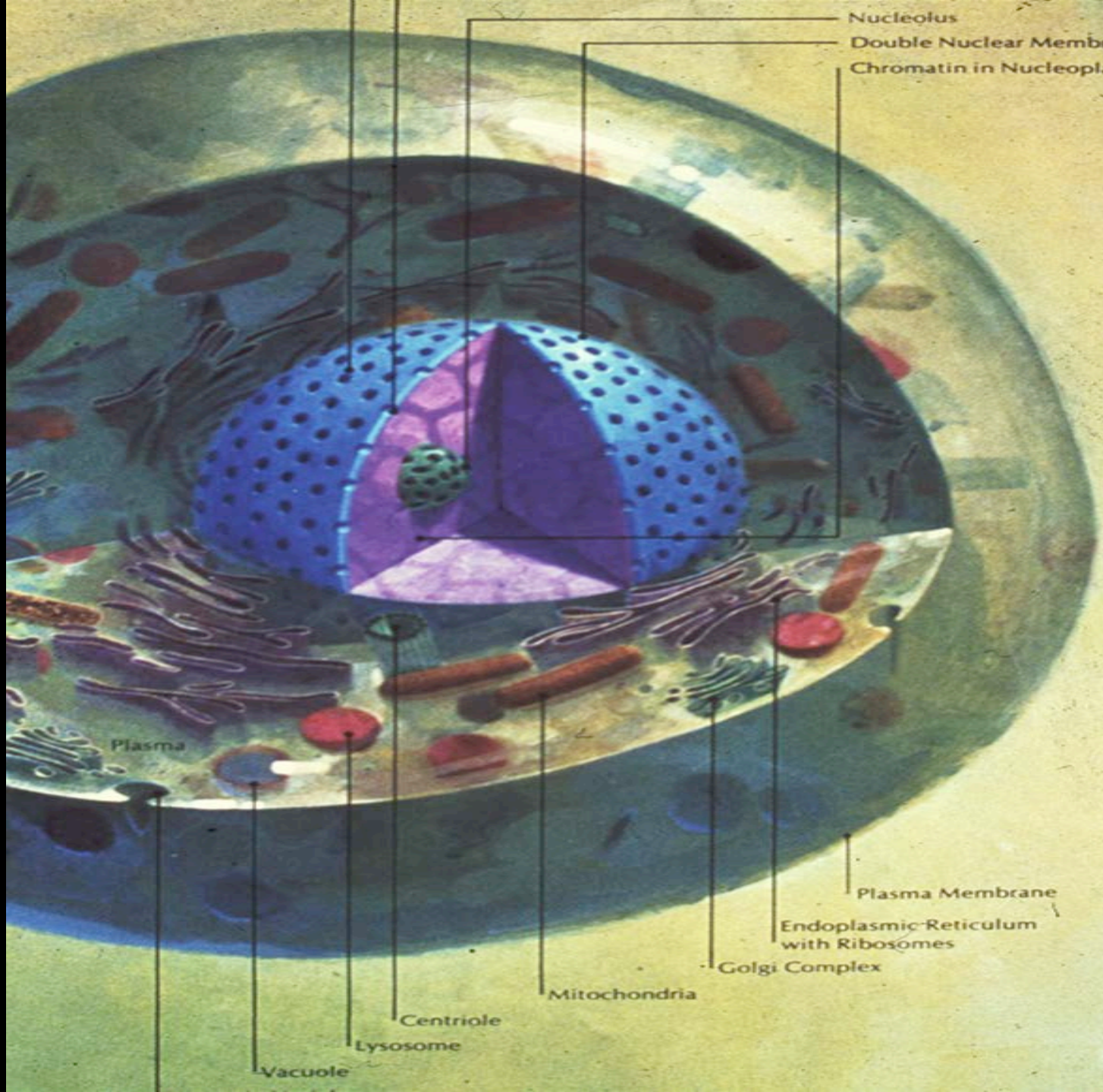




**Genetics**

# Evidence of Design

**Evolution - Life began in Simple Form**



Nucleolus  
Double Nuclear Membrane  
Chromatin in Nucleoplasm

Plasma

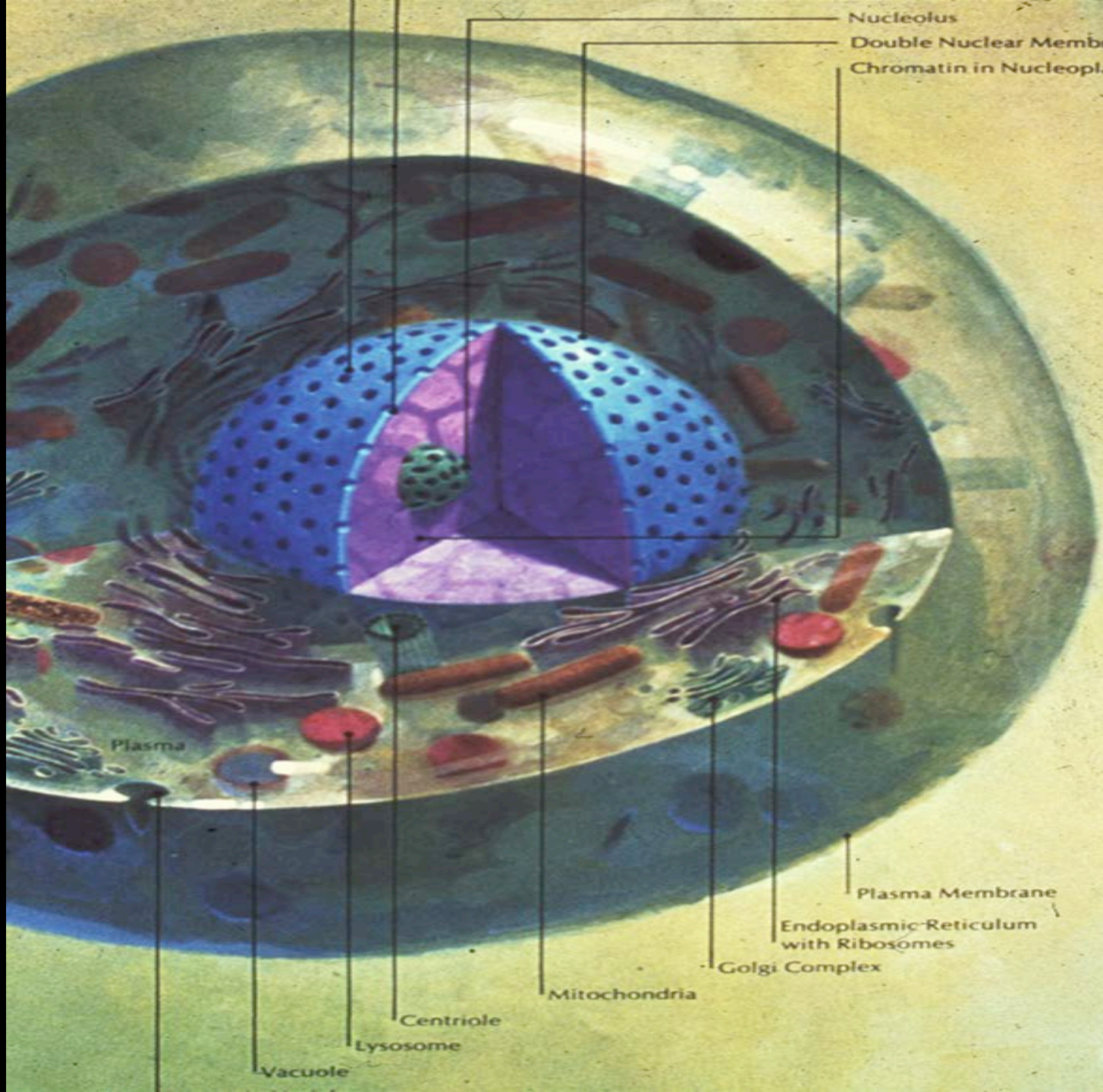
Plasma Membrane  
Endoplasmic Reticulum  
with Ribosomes  
Golgi Complex

Mitochondria

Vacuole  
Lysosome  
Centriole

# 1 CELL

- ✓ DNA
- ✓ RNA
- ✓ Mitochondrion
- ✓ ATP
- ✓ Polysaccharides
- ✓ Cyclic AMP
- ✓ Ribosomes
- ✓ Lysosomes
- ✓ Lipids
- ✓ Porphyrins
- ✓ Proteins
- ✓ Amino Acids



Nucleolus  
Double Nuclear Membrane  
Chromatin in Nucleoplasm

Plasma

Plasma Membrane  
Endoplasmic Reticulum  
with Ribosomes  
Golgi Complex

Mitochondria

Vacuole  
Lysosome  
Centriole

**“The cumulative result shows with piercing clarity that life is based on *machines*—machines made of molecules!”**

**Michael Behe**

**“Molecular biology has shown that even the simplest of all living systems on earth today, bacterial cells, are exceedingly **complex** objects. ... far **more complicated** than anything built by man ...”**

**Michael Denton**



# CAUSE & EFFECT

- **Fundamental Premise**
- **Relates All to Phenomenon**
- **No Effect Greater than Cause**
- **Implies a Primary Cause**

# 1<sup>st</sup> CAUSE

- ✓ Limitless Space
- ✓ Endless Time
- ✓ Boundless Energy
- ✓ Interrelationships
- ✓ Incredible Complexity
- ✓ Spiritual Values
- ✓ Human Responsibility
- ✓ Human Life
- ✓ Infinite
- ✓ Eternal
- ✓ Omnipotent
- ✓ Omnipresent
- ✓ Omniscient
- ✓ Spiritual
- ✓ Volitional
- ✓ Living

# GENERAL REVELATION

➤ **Conscience - 2:14-15**

➤ **History -  
interventions**



➤ **Creation - design**

**1:20 For since the creation of the world His invisible attributes, His eternal power and divine nature, have been clearly seen, being understood through what has been made, so that they are without excuse.**

# REVELATION

- **Extent -** since creation
- **Incomprehensibility -** invisible
- **Visibility -** clearly
- **Means -** creation
- **Accountability -** no excuse

# **RESPONSIBILITY**

## **1. General Revelation -**

**makes men responsible**

**adequate for condemnation**

**but not for salvation**

# GENERAL REVELATION

- 1. Tendency - 1:18      suppression**
- 2. Truth -      1:19      knowable**
- 3. Clear -      evident**
- 4. Internal -      2:14-15      conscience**
- 5. Understood - 1:19      implanted**
- 6. Constant - 1:20      creation**
- 7. Limited -      condemnation**

# **RESPONSIBILITY**

- 1. General Revelation -  
makes men responsible  
adequate for condemnation  
but not for salvation**
- 2. Special Revelation needed**



# SPECIAL REVELATION

**Deut 4:35 “To you it was shown that you might know that the Lord, He is God; there is no other besides Him.**

# SOURCES

1. General Revelation
2. Special Revelation
3. Jesus Christ



# JESUS CHRIST

**Jn 1:18 No man has seen God at any time; the only begotten God, who is in the bosom of the Father, He has explained Him.**

# **RESPONSIBILITY**

- 1. General Revelation -  
makes men responsible  
adequate for condemnation  
but not for salvation**
- 2. Special Revelation needed**
- 3. Examples**

# EXAMPLES

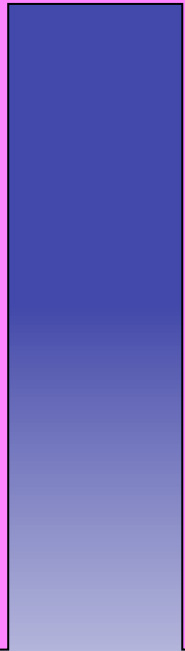
1. Ransford Sinabow

# REVELATION



**Realization -**

**19-20**



**Responsibility -**

**20**

A photograph of a sunset over the Sea of Galilee. The sun is a bright, glowing orb on the horizon, casting a shimmering path of light across the water's surface. The sky is filled with soft, golden clouds, and the overall scene is bathed in the warm, orange light of dusk. The foreground shows the dark silhouette of a hillside with some sparse vegetation.

**The more revelation we receive  
the more accountable we are!!!**

**Sea of Galilee from Kursi**