

# REVELATION

A large aircraft carrier is shown from a high-angle perspective, sailing on the ocean. The deck is visible, with several fighter jets parked. The ship is moving towards the right, leaving a white wake behind it. The sky is overcast.

**One of the most important  
books of the entire  
BIBLE**

# 7 CHURCHES





# Corrective Measures

# Assessment



# 7 CHURCHES

1. Ephesus - lost love
2. Smyrna - suffering
3. Pergamum - compromise
4. Thyatira - apostasy
5. Sardis - deadness
6. Philadelphia - faithful

# LAODICEA

## 1. Circumstances



**Thyatira**

**Pergamum**

**Smyrna**

**Ephesus**

**Sardis**

**Philadelphia**

**Laodicea**





**Pergamum**

**Thyatira**

Manisa

**Smyrna**

**Sardis**

**Philadelphia**

D-550

D-300

Izmir

O-32

O-30

**Ephesus**

O-31

Aydin

**Laodicea**

D-320

# Bridge Crossing Lycus River





# Bathhouse Arches



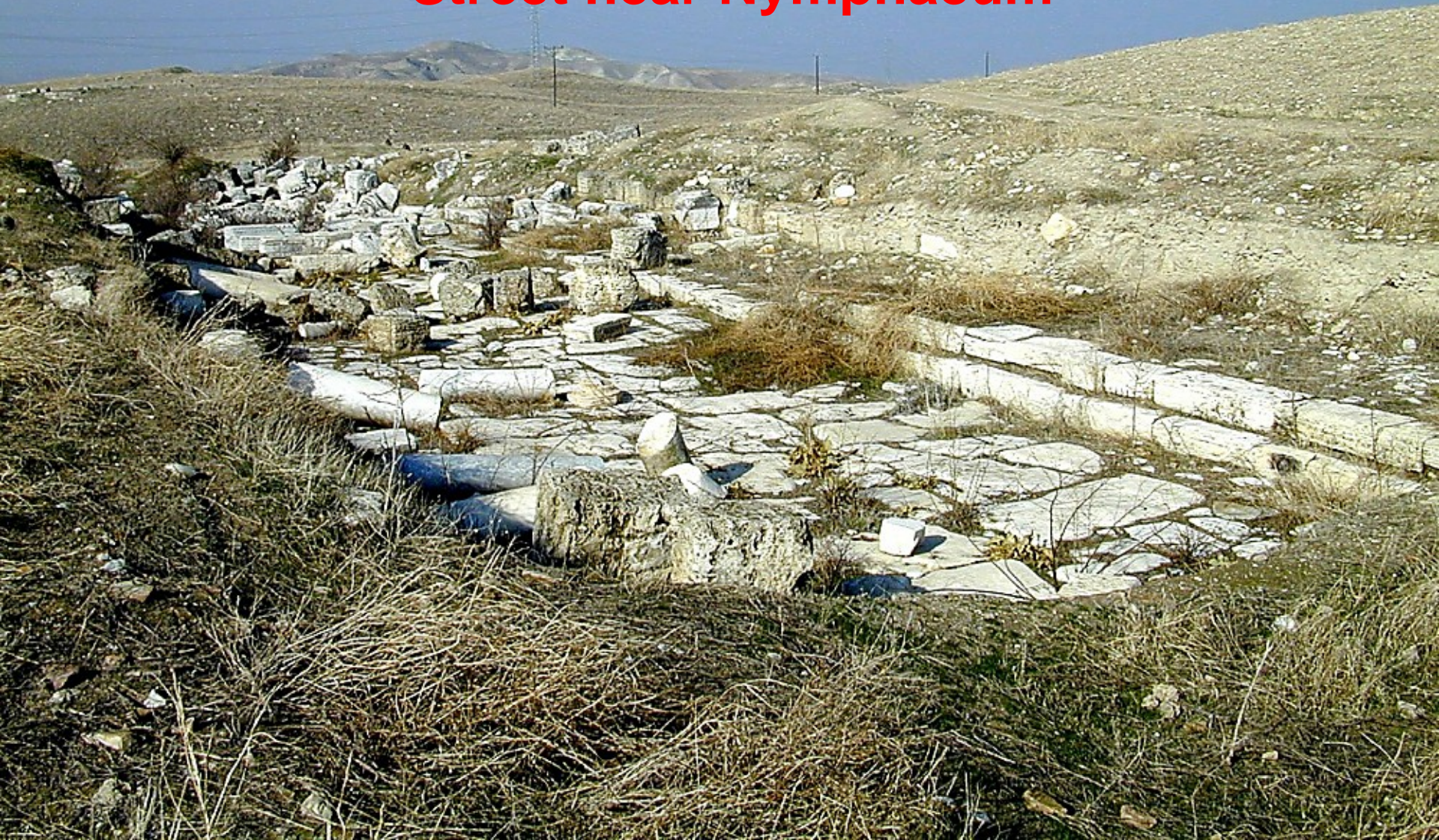
# Bathhouse and Gymnasium Remains





**Walls still standing**

# Street near Nymphaeum



# Street near Nymphaeum



# Laodicea Greek Theater



# Roman Theater



# Stadium east end





# Stadium from northeast



# Stadium northern seats



# Stadium seating with Inscriptions



# LAODICEA

1. Circumstances

2. Correspondent - 3:14

# DIVINE TITLES

**1. Amen - absolute truth**

# FINDING TRUTH

Scientific Truth

Objective

Present

Not Absolute

**“The concept of truth in science is thus quite special. It implies nothing eternal and absolute but only a high degree of confidence after adequate self-testing and self-correcting ...”**

**George G. Simpson**

# FINDING TRUTH

Scientific Truth

Objective

Present

Not Absolute

Tentative

Consensus



**“In science  
consistency of data  
interpretation  
constitutes proof.”**

**D. Dye**

# FINDING TRUTH

Scientific Truth

Objective

Present

Not Absolute

Tentative

Consensus

From man

# FINDING TRUTH

## Scientific Truth

Objective

Present

Not Absolute

Tentative

Consensus

From man

## Absolute Truth

Eternal

Unchanging

Unlimited

Ultimate Reality

Perfect

Omniscient Source

# ABSOLUTE TRUTH

1. Father - “God is true”
2. Son - “I am ... truth”
3. HS - “Spirit of truth”
4. His Word - “... word is truth”
5. Gospel - “... truth of the  
gospel”

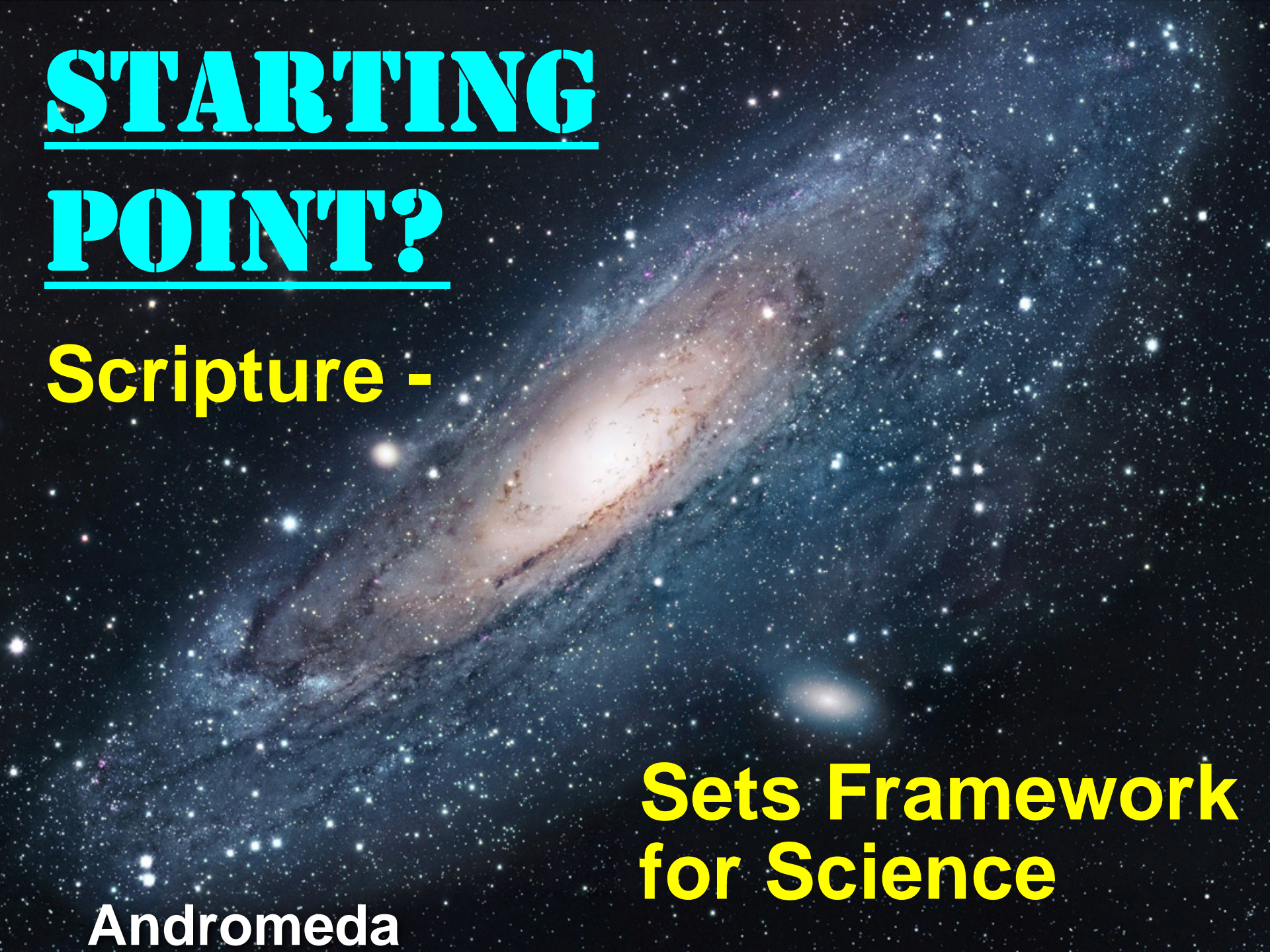
**STARTING**

**POINT?**

**Scripture -**

**Sets Framework  
for Science**

**Andromeda**



# **DIVINE TITLES**

- 1. Amen - absolute truth**
- 2. Faithful & True Witness - qualified to judge**
- 3. Beginning of Creation - supreme authority**

# LAODICEA

1. Circumstances
2. Correspondent - 3:14
3. (Compliment) - none
4. Complaint - 3:15-16



**Hieropolis**

**Laodicea**

**Colossae**

Saraykoy

Beylerbeyi

Pamukkale

Kocadere

Honaz

Denizli

Kovunallı

D-320

Izmir Bulvarı

Ankara Bulvarı Denizli-Ankara Yolu



# Hieropolis



# Hieropolis





**Calcium carbonate formations  
from hot mineral springs**





# Aqueduct Piece with Bathhouse Remains





**Aqueduct Pieces**



**Pipes with calcium**



A photograph of a sunset over a snowy mountain range. The sun is a bright, glowing orb in the center of the sky, casting a warm orange and yellow light across the scene. The mountains are covered in snow, and a winding road or path is visible in the foreground. A small lake or pond is on the left side of the image. The overall mood is serene and peaceful.

**Operating in flesh  
& needing fellowship  
with the Lord**

# Laodicea Greek Theater

**Self-satisfied**

**Half-hearted**

**Complacent**

**Compromised**

**Indifferent to real issues**

**Carnal**

**Spiritually flabby**

**Neutral**



# LAODICEA

1. Circumstances
2. Correspondent - 3:14
3. (Compliment) - none
4. Complaint - 3:15-16
5. Correction - 3:17-19
6. Challenge - 3:20-22

# 7 CHURCHES

1. Ephesus - lost love
2. Smyrna - suffering
3. Pergamum - compromise
4. Thyatira - apostasy
5. Sardis - deadness
6. Philadelphia - faithful
7. Laodicea - lukewarm