

# REVELATION

A large aircraft carrier is shown from a high-angle perspective, sailing on the ocean. The deck is visible with several fighter jets parked. The ship is moving towards the right, leaving a white wake behind it. The sky is overcast.

**One of the most important  
books of the entire  
BIBLE**

# 7 CHURCHES



- **Pertinence**
- **Properties**



# Corrective Measures

# Assessment



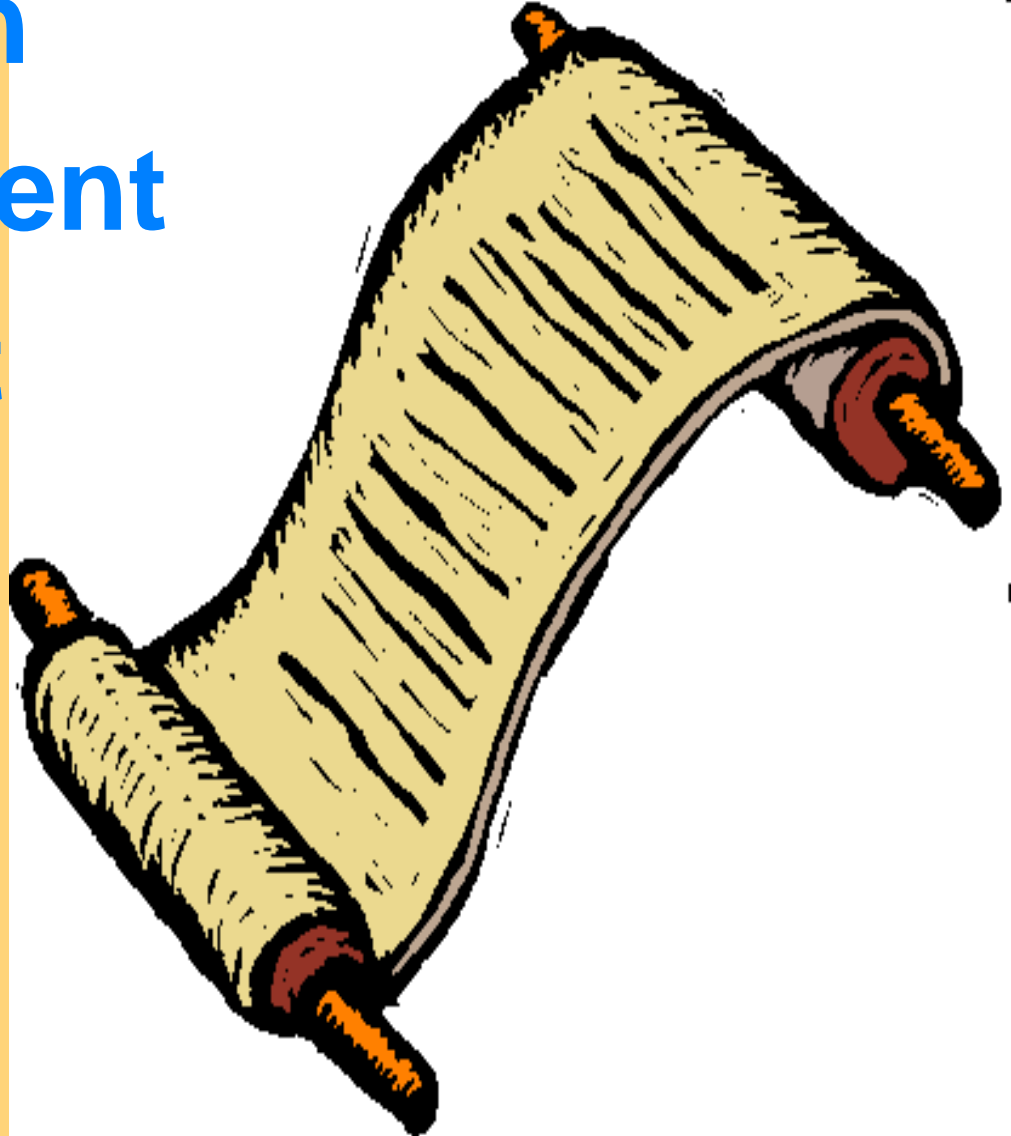
# 7 CHURCHES



- **Pertinence**
- **Properties**
- **Pattern**

# PATTERN

1. Commission
2. Correspondent
3. Compliment
4. Complaint
5. Correction
6. Call
7. Challenge



# 7 CHURCHES



- **Pertinence**
- **Properties**
- **Pattern**
- **Panorama**

# ESSENCE

- |                          |                   |
|--------------------------|-------------------|
| <b>1. Ephesus -</b>      | <b>Lost Love</b>  |
| <b>2. Smyrna -</b>       | <b>Suffering</b>  |
| <b>3. Pergamum -</b>     | <b>Compromise</b> |
| <b>4. Thyatira -</b>     | <b>Apostasy</b>   |
| <b>5. Sardis -</b>       | <b>Deadness</b>   |
| <b>6. Philadelphia -</b> | <b>Faithful</b>   |
| <b>7. Laodicea -</b>     | <b>Lukewarm</b>   |

# PANORAMA

- **Doctrinal Purity**
- **Practical Life**
- **Evil Dangers**
- **Future Perspective**



# EPHESUS

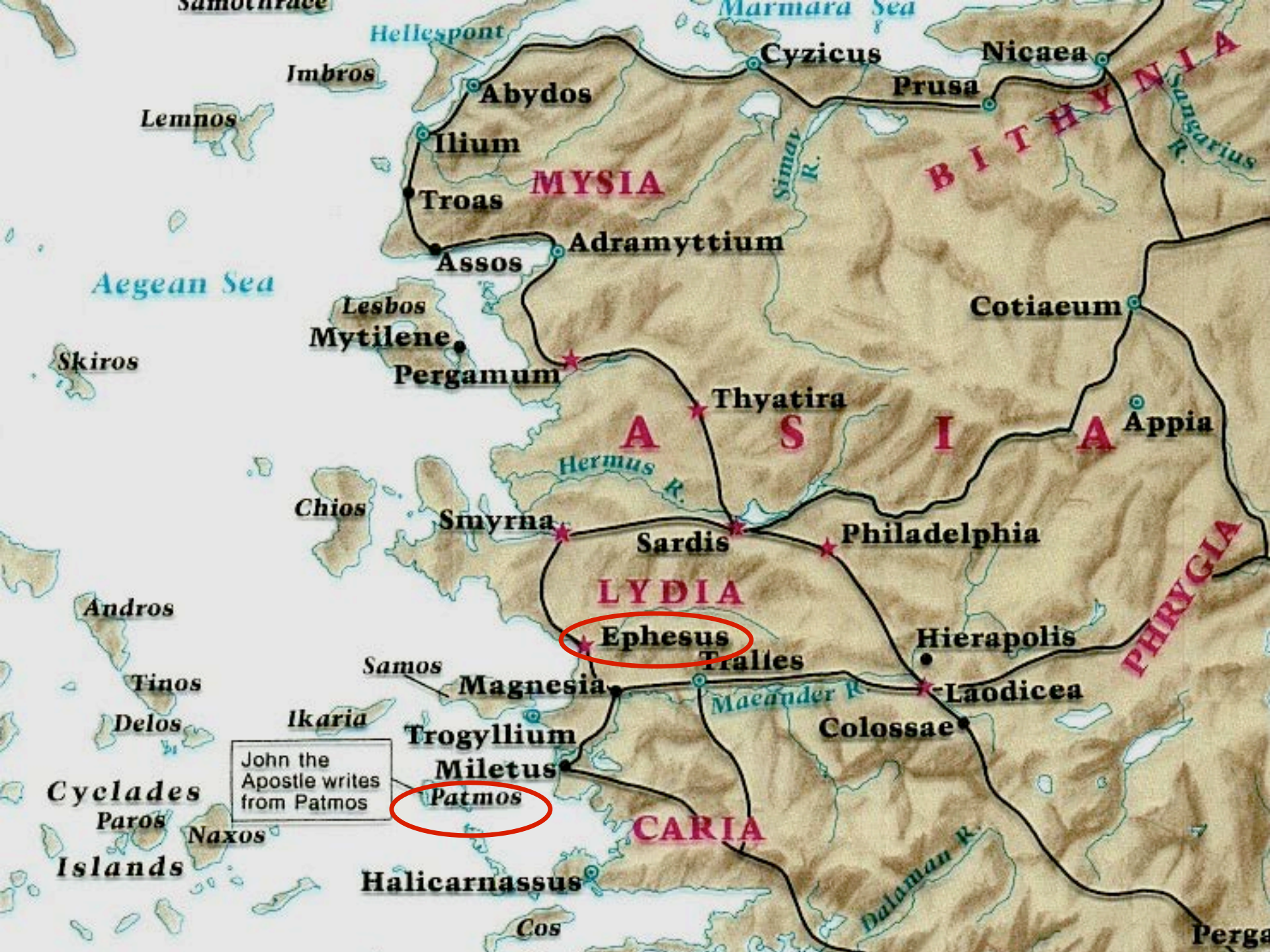
## 1. Circumstances





1 & 2 Thessalonians written from Corinth

- city
- ⋈ mountain pass
- ▲ mountain peak
- LYCIA Roman provincial name
- First Missionary Journey: Paul & Barnabas
- John Mark separates from Paul & Barnabas and returns to Jerusalem



John the  
Apostle writes  
from Patmos

Patmos

Ephesus



**Ephesus** →

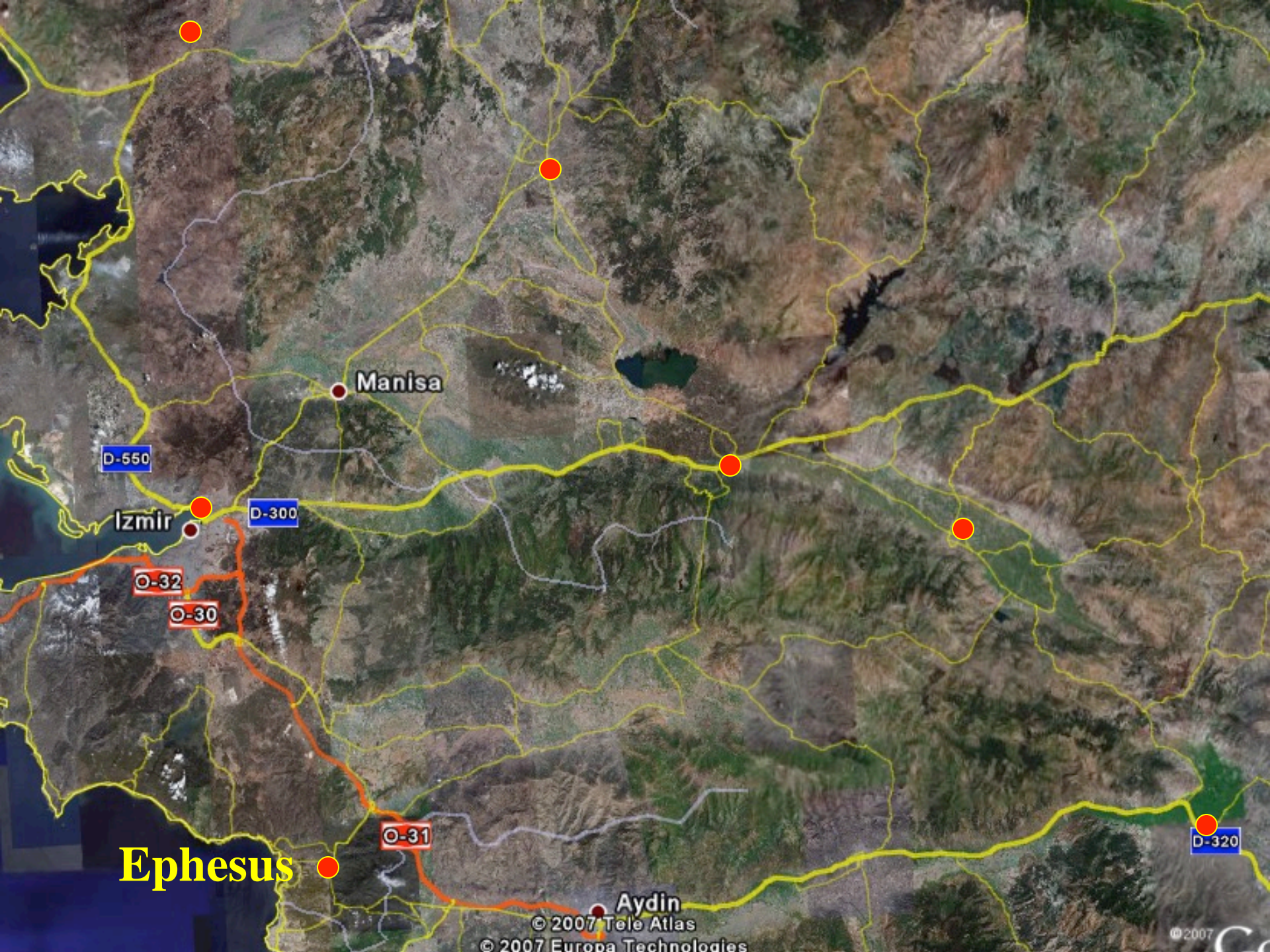


# Qusadassi Harbor



# Ephesus area of Temple of Artemis





Manisa

D-550

Izmir

D-300

O-32

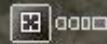
O-30

O-31

Aydin

D-320

Ephesus



Selçuk

Theater

Image © 2007 DigitalGlobe  
© 2007 Europa Technologies  
© 2007 Basarsoft  
© 2007 Tele Atlas

© 2007





**Harbor**

**Theater**

**Temple  
of Artemis**





# Emperor Domitian

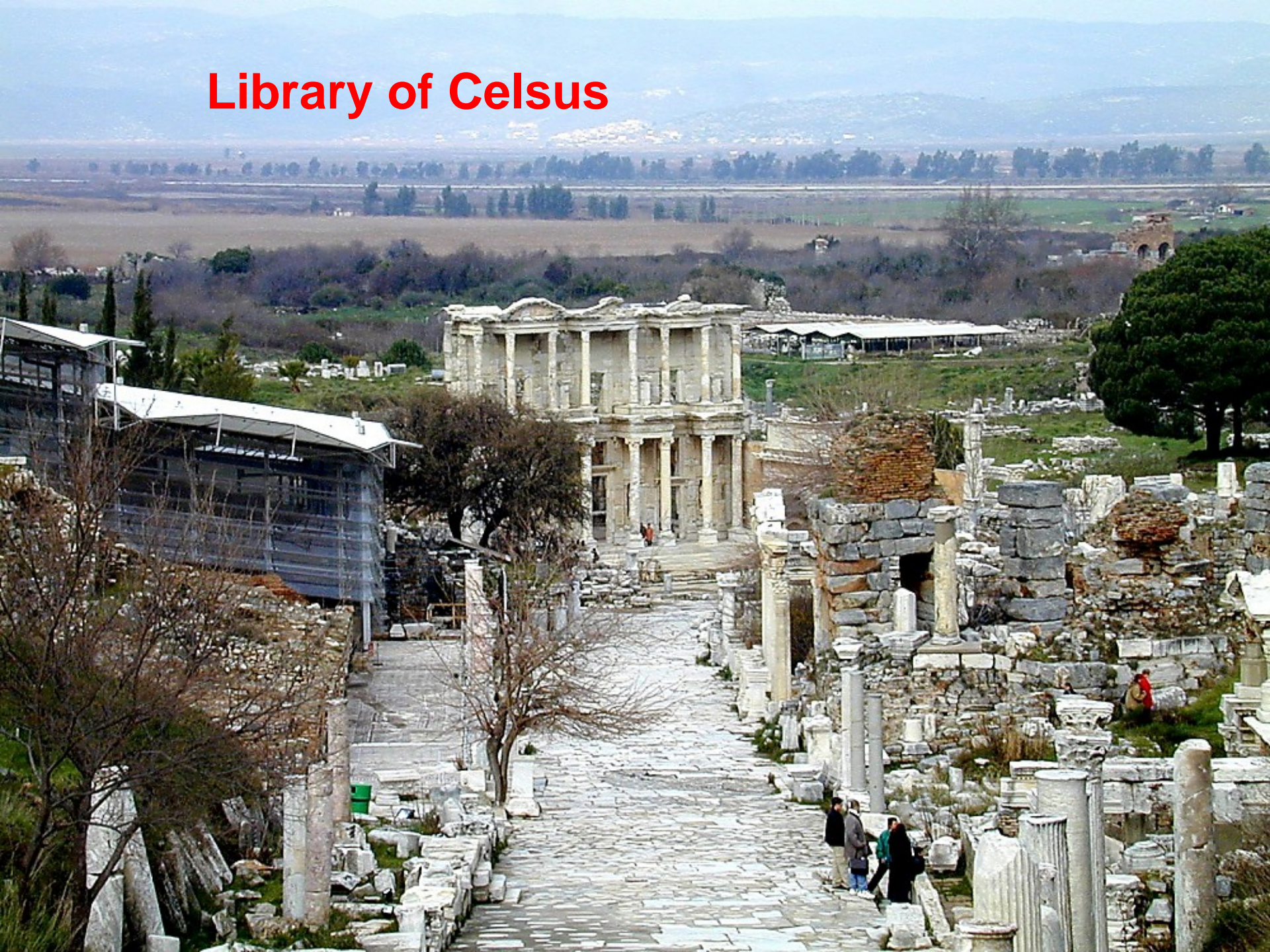
# Ephesus Street



**Street with  
Library of Celsus**



# Library of Celsus





**Theater**

**Library**

**Little  
Theater**

**Agora**

# Library of Celsus





A wide-angle photograph of ancient ruins, likely in Greece. The scene is dominated by a large, multi-tiered stone structure, possibly a theater or a monumental building, built from light-colored limestone. The structure features a prominent arched opening in the center. In the foreground, there are several stacks of large, rectangular stone blocks, some of which appear to be part of the ruins. To the left, a pile of reddish-brown pipes or columns is visible. A group of about ten people, including children and adults, are standing on a stone platform in the middle ground, looking towards the ruins. The background shows a hilly landscape under a cloudy sky. The text "Street and Small Theater" is overlaid in yellow on the lower-left portion of the image.

**Street and  
Small Theater**

# Frescoes in House





**Bathhouse  
Caldarium**





**475' x 98'**  
**25,000**



## Appian Way To Harbor

**There is  
nothing new  
under the sun!**



# Ephesus Street and Civic Agora





# Commercial Agora





**Temple of Artemis**

**Artemis, 1st c AD**  
**World-wide**





**Temple of Artemis**

**60' Column**  
**127 columns**



**Hadrian Temple,  
2nd c AD**



# 7 ANGELS

- Pastors
- Prophets
- Messengers
- Personification
- Guardians
- Witness



# EPHESUS

1. Circumstances

2. Correspondent -

2:1

3. Compliment -

2:2-3







# Appian Way





# EPHESUS

1. Circumstances
2. Correspondent - 2:1
3. Compliment - 2:2-3
4. Complaint - 2:4



**Lost love for Lord  
& replaced with  
cold orthodoxy**



**Small Theater**

# EPHESUS

1. Circumstances
2. Correspondent - 2:1
3. Compliment - 2:2-3
4. Complaint - 2:4
5. Correction - 2:5-6



# CORRECTION



➤ Remember

➤ Repent

➤ Repeat

➤ Or Removal

# EPHESUS

1. Circumstances
  2. Correspondent - 2:1
  3. Compliment - 2:2-3
  4. Complaint - 2:4
  5. Correction - 2:5-6
  6. Call - 2:7
  7. Challenge
- 
- A tall, fluted stone column stands prominently in the center of the image, rising from a base of stacked stones. The column is surrounded by a field of dry, brown grass. In the background, a town with white buildings and palm trees is visible, set against a backdrop of hills under a clear blue sky. The overall scene is bright and sunny.



# 7 CHURCHES

1. Ephesus - lost love

2. Smyrna -

